



Yellowknife
COMMUNITY FOUNDATION

www.yellowknifecommunityfoundation.ca

PHOTO: GAWAIN JONES



ANNUAL FOREVER IN OUR HEARTS BLACK TIE VALENTINE GALA

Over the Moon




*An unforgettable evening for you and your sweetheart
dinner, dancing, silent and live auctions*

SATURDAY, FEBRUARY 13, 2016
EXPLORER HOTEL KATIMAVIK ROOMS
COCKTAILS 6 PM | DINNER 7 PM | DANCING 9 PM



Tickets \$150 | Limited seating | A portion of ticket price is tax deductible
Early Bird price \$140 | Purchase before December 31, 2015

Tickets available at For Men Only, Lower level YK1 Mall

yellowknifecommunityfoundation.ca 

Fine and Performing Arts



Jenny Gamble-Fournier Memorial Fund
arts scholarship

Fine and Performing Arts Fund
support for education or training in the arts

**Enough Talk, Hurry Up and Do It
Already Scholarship Fund**
scholarships for performing arts students



Yellowknife Community Fund



Alexander Legaree, Coal Photography

**T-Bo Sculpture
Somba K'e Civic Plaza**

The Yellowknife Community Foundation is a strong supporter of the arts through scholarships in film, music, writing, drama, dance and performing and theatre arts and for projects like the T-Bo Sculpture at Somba K'e Civic Plaza on the shores of Frame Lake.

SUNDAY	MONDAY	TUESDAY	WEDNESDAY	THURSDAY	FRIDAY	SATURDAY
		1	2	3	4	5
DECEMBER						
6	7	8	9	10	11	12
13	14	15	16	17	18	19
20	21	22	23	24	25	26
				CHRISTMAS EVE	CHRISTMAS DAY	BOXING DAY
27	28	29	30	31		
				NEW YEAR'S EVE		

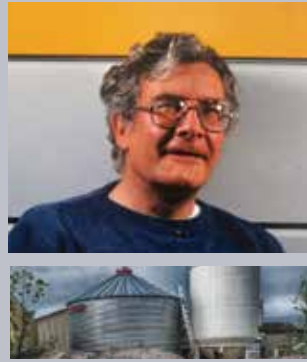
**People working together can
make a difference.**



JANUARY

ADAM HILL

Mining and Trades



Con Employees' Benevolent Fund
scholarships for trades or students in mining

Diavik Community Scholarship Fund
scholarships for trades or students in mining or resource development

NWT Mining Heritage Centre Fund
support for the Mining Heritage Centre

Walter Gibbins Memorial Fund
support for the Mining Heritage Centre mineral collection

Yellowknife Community Fund



Habitat for Humanity Northwest Territories

The Yellowknife Community Foundation and its supporters like Diavik Diamond Mine support mining and trades development through scholarships and by supporting important building projects like Habitat for Humanity homes in Yellowknife.



SUNDAY	MONDAY	TUESDAY	WEDNESDAY	THURSDAY	FRIDAY	SATURDAY
					1 <i>NEW YEAR'S DAY YELLOWKNIFE INCORPORATES AS A CITY, 1970</i>	2
3	4	5 <i>GARY ROBINSON MEMORIAL FUND CREATED, 2005</i>	6	7	8	9
10	11	12	13 <i>FIRST DONATION MADE TO THE COMMUNITY FUND, 1994</i>	14	15	16
17	18	19	20 <i>PAT MCMAHON MEMORIAL FUND CREATED, 2009</i>	21 <i>JOHN TUMCHEWICS MEMORIAL FUND CREATED, 2011</i>	22	23
24	25	26	27	28	29	30
	31					

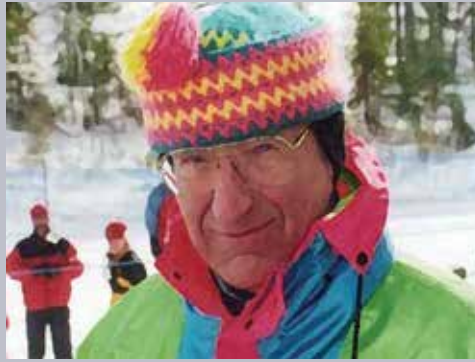
People working together can make a difference.



FEBRUARY

TESSA MACINTOSH

Sport and Healthy Living



David Sutherland Memorial Fund
support for cross country skiing

Chris Argue Memorial Fund
leadership development through self-propelled wilderness travel



Yellowknife Community Fund



Weledeh School Playground

The Yellowknife Community Foundation has supported playground and park projects at Range Lake, J.H. Sissons, Mildred Hall and Weledeh Schools. Safe play in the outdoors is a great way to encourage children to be healthy.

SUNDAY	MONDAY	TUESDAY	WEDNESDAY	THURSDAY	FRIDAY	SATURDAY
	1	2	3	4	5	6
7	8	9	10	11	12	13
NWT MINING HERITAGE CENTRE FUND CREATED, 2008						YELLOWKNIFE COMMUNITY FOUNDATION ANNUAL VALENTINE'S GALA
14	15	16	17	18	19	20
VALENTINE'S DAY					DAVID J. RAMSDEN MEMORIAL SCHOLARSHIP FUND CREATED, 2011	WALTER GIBBINS MEMORIAL FUND CREATED, 2008
21	22	23	24	25	26	27
DIAMOND COMMUNITY SCHOLARSHIP FUND CREATED, 2013						
28	29					

People working together can make a difference.



MARCH

TAWNA BROWN

Health and Community Service



Elaine (Sweet) Whitford Memorial Fund
scholarships for social work or nursing

Aurora College Scholarship
scholarships for North Slave Campus students

Jonas Konge Memorial Fund
grants and scholarships for health care

Yellowknife Community Fund



Avens, A Community for Seniors - Expansion Project

The Yellowknife Community Foundation has made a \$50,000 commitment to the Avens expansion project that will include more long term care beds and additional kitchen facilities for our growing seniors population.

SUNDAY	MONDAY	TUESDAY	WEDNESDAY	THURSDAY	FRIDAY	SATURDAY
		1	2	3	4	5
6	7	8	9	10	11	12 <i>LEGISLATIVE ASSEMBLY SCHOLARSHIP CREATED, 2014</i>
13 <i>TIME CHANGE SPRING AHEAD</i>	14	15	16	17 <i>ST. PATRICK'S DAY</i>	18 <i>YK ASSOCIATION FOR COMMUNITY LIVING INCORPORATED, 1974</i> <i>RANDY MCBRIDE HOCKEY PROJECT FUND CREATED, 2011</i>	19
20	21	22	23	24	25 <i>GOOD FRIDAY</i>	26
27 <i>EASTER SUNDAY</i>	28	29	30 <i>NWT ENVIRONMENTAL STEWARDSHIP FUND CREATED, 2015</i>	31		

People working together can make a difference.



APRIL

ED HARDY

Education and Civic Engagement



Legislative Assembly Scholarship
scholarships for political science students

Pat McMahon Memorial Fund
support for women in leadership

Yellowknife Community Fund



Habitat for Humanity Northwest Territories

The Yellowknife Community Foundation has supported Habitat for Humanity housing projects and in 2015 the new ReStore being developed near the City land fill site. The ReStore is a great way to reduce waste in our community and support much needed housing projects.

SUNDAY	MONDAY	TUESDAY	WEDNESDAY	THURSDAY	FRIDAY	SATURDAY
					1	2
3	4	5	6	7	8	9
10	11 <i>SALLY MANNING WRITING FUND CREATED, 2015</i>	12	13	14	15 <i>SCHOLARSHIP APPLICATION DEADLINE NEXT MONTH (MAY 15) SIDE DOOR RECEIVED FIRST GRANT FROM YCF, 1996</i>	16
17	18	19	20 <i>BARB BROMLEY MEMORIAL FUND CREATED, 2015</i>	21	22	23
24	25	26 <i>HELPING CHILDREN SOAR SCHOLARSHIP FUND CREATED, 2011</i>	27	28	29	30

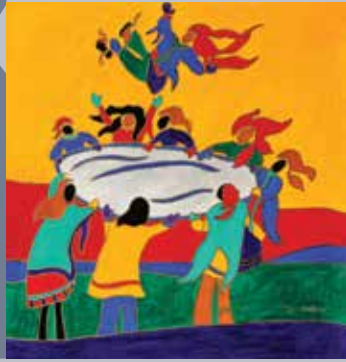
People working together can make a difference.



MAY

RILEY VELDHIJZEN

Education and Civic Engagement



Helping Children Soar
scholarships for residents raised in foster care

Lilly Borges Oldham Second Language Scholarship
scholarships for students studying another language

Loraine Minish-Cooper Memorial Fund
support for the Garden of Hope

Yellowknife Community Fund



Alexander Legaree, Coal Photography

Yellowknife Bike Safety Rodeo

The Yellowknife Community Foundation is a regular supporter of the City of Yellowknife's annual Bike Safety Rodeo for children. The safe operation of bikes are a great way to encourage a healthier and happier community.

SUNDAY	MONDAY	TUESDAY	WEDNESDAY	THURSDAY	FRIDAY	SATURDAY
1	2	3 JENNY GAMBLE FOURNIER MEMORIAL SCHOLARSHIP FUND CREATED, 1999	4	5	6 YK SEARCH AND RESCUE INCORPORATED, 1999	7
8 MOTHER'S DAY	9	10	11	12	13	14
15 SCHOLARSHIP APPLICATIONS DUE TODAY!	16	17	18	19 AURORA COLLEGE SCHOLARSHIP FUND CREATED, 2009	20 HELMETS FOR HARDY FUND CREATED, 2014	21
22	23 YELLOWKNIFE ROTARY CLUB INCORPORATED, 1979 VICTORIA DAY	24	25	26	27	28
29	30	31				

People working together can make a difference.



JUNE

GAWAIN JONES

Education and Civic Engagement



David J Ramsden Memorial Fund
scholarships for graduate studies students

Luke Charpentier Memorial Fund
scholarships for Yellowknife students,
grants for community improvement

Yellowknife Community Fund



Yellowknife Seniors Lunch with a Bunch

The Yellowknife Community Foundation has supported the Yellowknife Seniors Society and its programs like Lunch with a Bunch for nearly 20 years. Lunch with a Bunch is an opportunity for all seniors in Yellowknife and visitors to the city to get together and have a great lunch; catch up on the news and have a great time visiting.

SUNDAY	MONDAY	TUESDAY	WEDNESDAY	THURSDAY	FRIDAY	SATURDAY
			1 YELLOWKNIFE COMMUNITY FOUNDATION INCORPORATED, 1993	2	3	4
5	6	7	8 DAVID SUTHERLAND MEMORIAL FUND CREATED, 2005	9	10	11
12	13	14	15	16	17	18
19 FATHER'S DAY	20	21 ABORIGINAL DAY	22	23	24 ST. JEAN-BAPTISTE DAY WALLY2MILLION FUND CREATED, 2014	25
26	27	28	29	30 FINE AND PERFORMING ARTS FUND CREATED, 1999		

People working together can make a difference.



JULY

ADAM HILL

Fine and Performing Arts



Wally 12 Million Arts Scholarship
scholarships for fine arts or music

Timothy Henderson Memorial Scholarship for Students in the Arts
scholarships for students in the arts

Sally Manning Memorial Writing Fund
scholarships for writers

Yellowknife Community Fund



NWT Pipe Band

The Yellowknife Community Foundation offers six fine and performing arts related scholarships. It has also regularly supported other arts equipment and capital projects with the Yellowknife Guild of Arts and Crafts, the NWT Pipe Band, the Yellowknife Choral Society and others.

SUNDAY	MONDAY	TUESDAY	WEDNESDAY	THURSDAY	FRIDAY	SATURDAY
					1	2
					CANADA DAY	
3	4	5	6	7	8	9
						NUNAVUT DAY
10	11	12	13	14	15	16
17	18	19	20	21	22	23
24	25	26	27	28	29	30
	31					

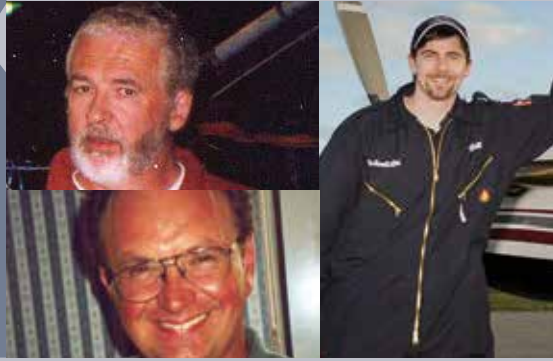
People working together can make a difference.



AUGUST

JOHN BALL

Transportation



Northern Aviation Scholarship
scholarships for students in the aviation industry

John Tumchewics Memorial Fund
scholarships for students in helicopter training or aviation

Yellowknife Community Fund



Yellowknife Search and Rescue

The Yellowknife Community Foundation offers three transportation related scholarships and grant programs. It also supports interesting northern solutions to the emergency transportation as shown above in the Yellowknife Search and Rescue's Snowbulance, funded by the Gary Robinson Memorial Fund.

SUNDAY	MONDAY	TUESDAY	WEDNESDAY	THURSDAY	FRIDAY	SATURDAY
	1 <i>MARY BETH MILLER MEMORIAL FUND CREATED, 2000 CIVIC HOLIDAY</i>	2	3	4	5	6
7	8	9	10	11	12 <i>LORAIN MINISH-COOPER MEMORIAL FUND CREATED, 2004</i>	13
14	15	16	17	18	19	20
21	22	23	24	25	26	27
28	29	30	31 <i>DOUGLAS BOTHAMLEY MEMORIAL FUND CREATED, 2015</i>			

People working together can make a difference.



SEPTEMBER

JUSTINA BLACK

Emergency Services and Safety



Gary Robison Memorial Fund

grants for search and rescue or emergency response

Helmets for Hardy

helmet safety education

Yellowknife Community Fund



Yellowknife Search and Rescue

The Yellowknife Community Foundation supports rescue and emergency services through grants to Yellowknife Search and Rescue, Yellowknife Coast Guard Auxiliary, Yellowknife Marine Rescue and the Yellowknife Fire Department. Helmets for Hardy is a Foundation supported program that encourages helmet use for biking, skateboarding and other activities to prevent head injuries.



People working together can make a difference.

SUNDAY	MONDAY	TUESDAY	WEDNESDAY	THURSDAY	FRIDAY	SATURDAY
				1	2	3
4	5 <i>FIRST GOLD BRICK POURED AT CON MINE, 1938</i> <i>LABOUR DAY</i>	6	7	8	9	10
11	12	13	14	15	16	17
18	19	20	21	22	23	24
25	26 <i>YELLOWKNIFE SKI CLUB FOUNDED, 1968</i>	27	28	29	30 <i>LUKE CHARPENTIER MEMORIAL FUND CREATED, 2014</i>	



OCTOBER

JUSTINA BLACK



Albert Hall Seniors Enhancement Fund
grants for Avens Seniors projects

Barb Bromley Memorial Fund for Seniors and Elders
grants for seniors and elders programming

Yellowknife Community Fund



Yellowknife Community Garden

Community gardens are a great way to promote healthy foods, physical activity and an appreciation of the natural beauty of the land. The Yellowknife Community Foundation has supported community gardens, composting and environmental projects as a way of promoting a healthier and happier Yellowknife.

SUNDAY	MONDAY	TUESDAY	WEDNESDAY	THURSDAY	FRIDAY	SATURDAY
						1
2	3	4 <i>CON EMPLOYEES' BENEVOLENT FUND CREATED, 2011</i>	5	6	7	8
9	10 <i>ALBERT HALL SENIORS ENHANCEMENT FUND CREATED, 2013 THANKSGIVING</i>	11	12 <i>JONAS KONGE MEMORIAL FUND CREATED, 2010</i>	13	14 <i>LILLY BORGES OLDHAM SECOND LANGUAGE SCHOLARSHIP FUND CREATED, 2002</i>	15
16	17 <i>ENOUGH TALK, HURRY UP AND DO IT ALREADY ARTS SCHOLARSHIP FUND CREATED, 2006</i>	18	19	20	21	22
23	24	25	26	27	28	29
	30 <i>HALLOWEEN</i>	31				

People working together can make a difference.



NOVEMBER

GAWAIN JONES



Yellowknife Community Fund



Ecology North
Portable Water Lab

Doug Ritchie was a well-known and highly respected NWT environmental activist. He loved the NWT, the land and its people and wanted to make the North a better place for all of its residents.

The NWT Environmental Stewardship Fund was established as a way to honour Doug's memory and continue the good work to which Doug dedicated much of his life. In 2015, four one-time projects will be supported through the Fund.

**People working together can
make a difference.**

SUNDAY	MONDAY	TUESDAY	WEDNESDAY	THURSDAY	FRIDAY	SATURDAY
		1	2	3	4	5
6	7	8	9	10	11	12
TIME CHANGE FALL BACK				ELAINE (SWEET) WHITFORD SCHOLARSHIP FUND CREATED, 2009	REMEMBRANCE DAY	
13	14	15	16	17	18	19
20	21	22	23	24	25	26
27	28	29	30			



DECEMBER

DANIELLE GILLARD

Healthy Living and Sport



Randy McBride Hockey Project Fund
support for advanced levels of hockey

Mary Beth Miller Memorial Fund
support for cross-country skiing,
biathlon, mountain biking, speed skating,
canoeing or kayaking



Yellowknife Community Fund



Yellowknife Catholic Schools - Accidents are Brutal - Protect Your Noodle

The Yellowknife Community Foundation supports student safety projects like the Yellowknife Catholic Schools - Accidents are Brutal - Protect Your Noodle, SADD (Students Against Destructive Decisions), Taiga Adventure Camp for Girls and Young Women and others. Safety equipment and programs are an important way to protect our future.

SUNDAY	MONDAY	TUESDAY	WEDNESDAY	THURSDAY	FRIDAY	SATURDAY
				1	2	3
4	5	6	7	8	9	10
11	12	13	14	15	16 <i>CHRIS ARGUE MEMORIAL FUND CREATED, 2003</i>	17
18	19	20	21	22	23	24
25	26	27	28	29	30	31 <i>CHRISTMAS EVE</i>
<i>CHRISTMAS DAY</i>	<i>BOXING DAY</i>			<i>BETTY HOUSE - RECIPIENT OF LARGEST DONATION TO DATE, \$50,000, 2010</i>		<i>DEC 31 IS THE LAST DATE FOR A 2015 CHARITABLE TAX RECEIPT NEW YEAR'S EVE</i>

People working together can make a difference.

2015 SCHOLARSHIP RECIPIENTS

Congratulations!



Alyssa Carpenter
AURORA COLLEGE SCHOLARSHIP



Martha Hamre
CON EMPLOYEES' BENEVOLENT FUND



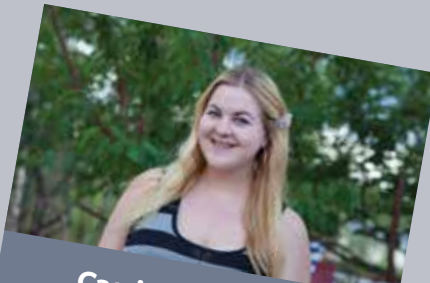
John Mutford
DAVID J. RAMSDEN MEMORIAL FUND



Courtney Chetwynd
WALLY2MILLION SCHOLARSHIP



Kathleen O'Brien
LEGISLATIVE ASSEMBLY SCHOLARSHIP



Cassi Atamanenko
FINE & PERFORMING ARTS FUND



Kathleen Sullivan
ELAINE (SWEET) WHITFORD MEMORIAL FUND & PAT MCMAHON MEMORIAL FUND



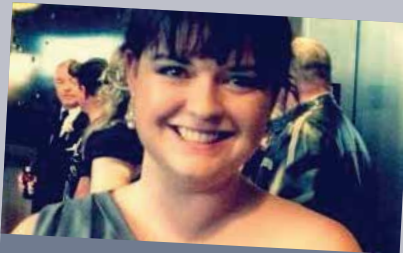
Stephen Giovanetto
DIAVIK COMMUNITY SCHOLARSHIP FUND



Jessica Norris
DIAVIK COMMUNITY SCHOLARSHIP FUND



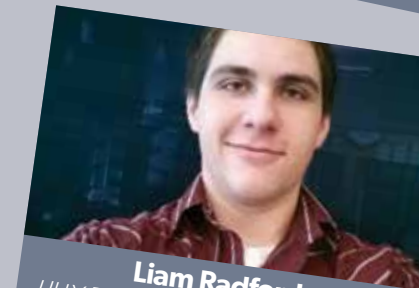
Lucas Othmer
FINE & PERFORMING ARTS FUND



Ashley Debogorski
JONAS KONGE MEMORIAL FUND



Karalyn Menicoche
LEGISLATIVE ASSEMBLY SCHOLARSHIP



Liam Radford
LILLY BORGES OLDHAM SECOND LANGUAGE SCHOLARSHIP



Jeanne Yuris
LUKE CHARPENTIER MEMORIAL FUND



Roxanne Livingstone
SALLY MANNING MEMORIAL WRITING FUND



Adina Tarralik Duffy
SALLY MANNING MEMORIAL WRITING FUND



Tehnille Gard
RANDY MCBRIDE HOCKEY PROJECT FUND



Donny Boake
MARY BETH MILLER MEMORIAL FUND



Nancy Ngo
LUKE CHARPENTIER MEMORIAL FUND

2014/2015 GRANT RECIPIENTS

Yellowknife Community Grants

Avens • Expansion Project

Ecology North • Portable Water Lab

City of Yellowknife • Bike Rodeo

Habitat for Humanity • ReStore

Ruff Diamonds Dog Agility Club • Equipment

Tides Canada • Leadership Program Equipment

Yellowknife Seniors Society • Lunch with a Bunch

Canadian Hard of Hearing - Yellowknife Branch •
Hearing Equipment

YWCA Yellowknife • Flower Boxes

Yellowknife Ski Club • High Performance
Program

Loraine Minish-Cooper Garden of Hope •
Equipment

Helmets for Hardy • Helmet Safety Program

Yellowknife Search and Rescue • Rescue
Equipment



Avens - A Community for Seniors
EXPANSION PROJECT



Habitat for Humanity NWT
RESTORE



Ruff Diamonds Dog Agility
EQUIPMENT



Search and Rescue
RESCUE EQUIPMENT



Ecology North
PORTABLE WATER LAB



Yellowknife Ski Club
HIGH PERFORMANCE PROGRAM

**People working together can
make a difference.**

2015 GALA SPONSORS

Title Sponsor



Champion Sponsors



Friends of the Gala

Explorer Hotel • Janet and Marvin Robinson • Pack Rat Mini Storage and RV Parking
Unico Contractors (NWT) Ltd. • Tirecraft • Northern Safety Association • Alex & Sheila Arychuk

Live Auction Donors

Buffalo Airways • Stephanie Yuill, Greyson Gritt, Carl Bird & Tait Communications • First Air & Advanced Medical Solutions
Visual Effects and Graeme Shaw • PSAV, Igloo Building Supplies • Konge Construction & Canadian Tire

Auction Donors

Quality Furniture • Chef Pierre at the Lodge • PSAV • Rob Butler & Tannis Hushagen • Explorer Hotel • Northern Engraving
Great Slave Helicopters • NAPA Autoparts • Omega Marine • Roy's Audio Video Unlimited • Old Town Glassworks • For Women Only
Hilya Hall • Lisa Tesar & Lona Collins • Northern Frontier Visitors Association • Crowe MacKay LLP • Yellowknife Racquet Club
Shoppers Drug Mart • Visual Effects & Fran Hurcomb, Germaine Arnaktauyak, Landon Peters • Yellowknife Guild of Arts and Crafts
Avery, Cooper & Co. • City of Yellowknife • Northern Images • Overlander Sports • Gourmet Cup • Ragged Ass Barbers • Signed.
For Men Only • BL Jewellery • Carolyn Cronk • Theresa McRae Interior Designs • Tom & Ann Hall • Flowers North • PartyLite

Calendar Sponsor



RTL - Robinson Enterprises Ltd.

INTERESTED IN BECOMING A SPONSOR?

Check out our website at
www.yellowknifecommunityfoundation.ca
for opportunities.

SPONSORS AND SUPPORTERS

Legacy Sponsors 1993-2013



RTL - Robinson Enterprises Ltd.

signed.

The Yellowknife Community would like to thank the many businesses and individuals who supported us during our first 20 years of operation. Your contributions have helped us demonstrate that people working together can make a difference.

Legacy Contributors

Artisan Press
BHP Billiton
Braden Burry Expediting
Canadian North
Canarctic Graphics
Carron Business Services
Cascom
City of Yellowknife
Coal Photography
Diavik Diamond Mines
First Air
Genesis Group
Gullberg, Wiest and MacPherson
Inkit
Johnson, Gullberg, Wiest and MacPherson
Lawsun Lundell, McLennan Ross
Northern News Services
Northwest Territories Power Corporation
Northwestel
Quality Furniture
Tait Communications
Explorer Hotel

Legacy Friends

Birchwood Gallery | YK Tix | Canadian Tire | Creative Basics
Diana Curtis Design | Roy's Audio Video | M&M Meats
NWT Opimian Society | Royal Bank of Canada
Shoppers Drug Mart | Sutherlands Drugs
Visual Effects | Yellowknife Direct Charge Co-op
Yellowknife Foto Source | Yellowknife Hardware

Calendar Photographers



Adam Hill
adamhillstudios.ca



Tessa Macintosh



Tawna Brown
tawnabrown.com



Ed Hardy
www.edhardy.ca



Riley Veldhuizen
rileyveldhuizen@hotmail.com



Gawain Jones



Adam Hill
adamhillstudios.ca



John Ball



Justina Black
flickr/justinablack



Justina Black
flickr/justinablack



Gawain Jones



Danielle Gillard



Gawain Jones

2015 President's Message



It is a real pleasure to be able to look back at a year of continued activity and growth. In 2015, we managed to see growth in both our asset base and the number of funds we administer.

Before looking at some of the highlights from the past year, I'd like to talk a bit about the Foundation.

The Yellowknife Community Foundation's mission is to enhance the quality of life of our citizens with funding opportunities to address charitable needs. As a member of the Community Foundations of Canada, we are one of the 191 foundations who connect together to form a national network to help Canadians invest in building strong, resilient places to live, work, learn and play.

Our Board of Directors consist of 11 highly committed volunteer members, supported by a part-time Executive Director, who is critical to our functioning, as well as many other volunteers. The Board meets monthly. Between meetings, our Directors work in a variety of Committees to move the work of the Foundation forward. Annually, the Board holds a special day-long Strategic Planning meeting to set goals for the coming year.

We currently administer 33 funds, of which 22 are scholarships. Several are field of interest funds, while the Yellowknife Community Fund allows us to assist with many other charitable purposes. In 2015 we distributed over \$110,000 in grants and scholarships in areas like: social housing, education, seniors, children and youth, arts, culture and heritage, sport and physical activity, health and safety, and community services.

We also continue to host the annual "Forever in our Hearts Valentine Gala". This year was our most successful yet, raising over \$70,000. We hope to next year's "Over the Moon" event

will once again exceed our expectations. This event is our main fundraiser, supporting a large part of our operational needs.

In 2015 we held our second annual barbecue for fund families, board members and grant and scholarship recipients. Despite the less than auspicious weather, over 75 people attended, and we all enjoyed ourselves, notwithstanding the torrential downpour that drew a dramatic end to the event.

This barbecue is just a small way of saying thank you to fund families who, despite facing personal loss, so generously entrust their donations to us. Our Legacy sponsors also continue enable us to function. In particular we would like to thank Avery Cooper, Crowe MacKay, Signed and RTL. We are also extremely grateful to Diavik Diamond Mines who have been our main Gala Sponsor since its inception in 2010.

Each year many people generously volunteer their time to the Foundation. Without them we simply would not exist. This year we participated in the City of Yellowknife Volunteer Appreciation Celebration at which we recognized Darrell Vikse, a past President and tireless volunteer who has played a critical role in the continuing development of the Foundation.

Bronwyn Watters
President

2015 BOARD MEMBERS

Bronwyn Watters | President, 2012 to present

Karin Taylor | Vice-President and Member, April 2013 to present

Bernie Bauhaus | Treasurer, 2012 to present

Robert O'Rourke | Secretary, 2010 to present

Charles Dent | President and Board member, 2010 to present

Dan Daniels | Member, April 2014 to present

David Gilday | Member, April 1, 2008 to present

Ian Legaree | Member, 1993-2001, 2003 to 2012, 2014 to present

Margaret Melhorn | Member, November 1, 2012 to present

Michael Vaydik | Member, April 1, 2012 to present

Vicki Tompkins | Member, October 1, 2014 to present

HOW TO DONATE

Donations can be made to the Yellowknife Community Foundation:

1. **On-line** through CanadaHelps.Org
2. **Downloading and completing a donation form from our website** at www.YellowknifeCommunityFoundation.ca
3. **Mailing a cheque to us at:** P.O. Box 1620, Yellowknife, NT, X1A 2P2
4. **Dropping by our office** at the Northern Frontier Visitors Centre at 4807 49th Street, Yellowknife, NT

If you are interested in establishing a Fund with the Foundation please contact us at: phone -(867) 446-4527 or email - info@yellowknifecommunityfoundation.ca.

The Yellowknife Community Foundation's Charitable Taxation # is 889101978 RR0001.

Printed in Yellowknife, NT by Canarctic Graphics



BOX 1620 | 4807 49TH STREET | YELLOWKNIFE, NT X1A 2P2
(867) 446-4527

info@yellowknifecommunityfoundation.ca
www.yellowknifecommunityfoundation.ca