



# Yellowknife Community Foundation

2011 ANNUAL REPORT AND SEPTEMBER 2012 TO APRIL 2014 CALENDAR

BOX 1620 | 4807 49TH STREET | YELLOWKNIFE, NT X1A 2P2 | (867) 446-4527  
YELLOWKNIFECOMMUNITYFOUNDATION@GMAIL.COM | [WWW.YELLOWKNIFECOMMUNITYFOUNDATION.CA](http://WWW.YELLOWKNIFECOMMUNITYFOUNDATION.CA)



SEPTEMBER<sub>2012</sub>

KEVIN KLINGBEIL  
[www.klingbeilphotography.com](http://www.klingbeilphotography.com)

# John Tumchewics Memorial Fund

Established in 2011 by his family to recognize John’s helpful spirit and love of flying and as an enduring contribution to the development of skill and safety in helicopter operation.

Born and raised in Yellowknife, John was a young man of genuine wit, warmth and intelligence. Regular trips to the family’s cabin at Prelude Lake shaped John’s childhood and inspired him to become a capable outdoorsman. He also loved to read, draw and tell stories. John learned to cross country ski at the Yellowknife Ski Club and later raced as a member of the NWT Ski Team.

After graduating from Sir John Franklin High School in 2007, John worked at Con Mine like his father and grandfather. In 2008, he worked at exploration camps in Nunavut, where his experiences helped him decide to pursue a career as a commercial helicopter pilot. John’s remarkable ability to size up a person or situation, find its truth and funny side, no matter how grim, won him friends of all ages, and made him a natural leader. He had a way with words, and was always quick with comebacks, jokes and puns. His wide-ranging interests included history, travel, current events, boating, building and fixing things.

Always ready and willing to help with practical assistance, a friendly joke and a smile, John

was generous with his time in helping others. As a classmate from his flight school remembers, “John had a heart the size of Texas. He was forever picking up fellow students and giving them a ride to and from school or wherever they needed to go.” He was loyal to his friends and family. John became a commercial helicopter pilot and was killed in a helicopter accident July 23, 2010 at the age of 21.

The John Tumchewics Memorial Fund was established to assist individuals with helicopter flight training, upgrading by endorsements or ratings and the purchase of safety equipment. Aircraft maintenance engineers working toward a helicopter endorsement may also apply. Scholarship funds may also be used for other individuals seeking training in the aviation field.



SUNDAY	MONDAY	TUESDAY	WEDNESDAY	THURSDAY	FRIDAY	SATURDAY
						1
					LABOUR DAY	
2	3	4	5	6	7	8
			FIRST GOLD BRICK POURED AT CON MINE 1938			
9	10	11	12	13	14	15
16	17	18	19	20	21	22
						FIRST DAY OF FALL
23	24	25	26	27	28	29
	30		YELLOWKNIFE SKI CLUB FOUNDED, 1968			

**MINE  
RESCUE  
IN ACTION!**



**Canadian  
Mine Rescue  
Competition**

SAT. JUN 25 8 AM - 4 PM  
SIR JOHN FRANKLIN  
SCHOOL GROUNDS  
YELLOW KNIFE

OCTOBER 2012

# Randy McBride Hockey Project Fund

In 2011, the Yellowknife Gold Dusters Hockey Club launched the Randy McBride Hockey Project Fund to provide scholarships for northern youth pursuing their hockey careers at a high performance level.

The Project is named after Randy McBride, a long-time resident of the Northwest Territories who is a member of the Royal Canadian Mounted Police. He started playing hockey at the age of five in Borden, Ontario, and the game continues to be his passion. Randy joined a league everywhere he lived. In Midget hockey, he played for the Yorkton Junior B Terriers and then moved up to the Tier Two Saskatchewan Junior Hockey League Yorkton Terriers team, winning Rookie of the Year Award. At 16 years old, Randy was selected to play for the Saskatchewan All-Star Team, representing the Province of Saskatchewan in the Canadian National Midget Championships.

In 1980, Randy joined the RCMP and was stationed in High Prairie, Alberta, where he joined the local hockey league. In 1984, he was transferred to Yellowknife, where he joined the senior men's hockey league. He was transferred to Fort McPherson in 1987, where he organized and participated in the local men's hockey league and Inuvik Men's Hockey League twice a week. He also played for Team NWT at the 1988 Arctic Winter Games in Fairbanks, Alaska. In 1989, he was transferred to Baker Lake and

participated in the local men's league. In 1991, he was transferred back to Yellowknife and played in both the Men's Recreational Hockey League and the Old-timers Hockey League – for the Gold Dusters.

Randy suffered a stroke in 2007 that was related to an earlier hockey injury that has ended his playing career. However, he still continues to be involved in the game he loves by coaching his Senior Men's Recreation Hockey League team and the RCMP

team in the RCMP-Yellowknife Fire Department Memorial Hockey Challenge.

His love of hockey and appreciation of the benefits it brings to individuals and the community has always been strong. His teammates from Gold Dusters Hockey Club launched the fund as a way of recognizing Randy's contribution to the sport and our community and encouraging the continued growth of the great game of hockey.



SUNDAY	MONDAY	TUESDAY	WEDNESDAY	THURSDAY	FRIDAY	SATURDAY
	1	2	3	4	5	6
7	8 <i>THANKSGIVING</i>	9	10	11	12	13
14	15	16	17	18	19	20
21	22	23	24	25	26	27
28	29	30	31 <i>HALLOWEEN</i>			



DAVE BROSHA  
www.davebrosha.com

## NEW FUNDS IN 2011

- John Tumchewics Memorial Fund
- Randy McBride Hockey Project Fund
- NWT Foster Family Scholarship Fund
- Con Employees' Benevolent Fund



NOVEMBER<sub>2012</sub>

DAVE BROSHA  
[www.davebrosha.com](http://www.davebrosha.com)

# Foster Family Coalition of the NWT Scholarship

In 2011, the Foster Family Coalition of the NWT, with help from BHP Billiton and other generous donors, established a scholarship designed to assist people who have grown up in foster care with pursuing their educational dreams.

The scholarship offers an additional source of support for youth growing up in foster care when furthering their education.

A distinctive logo was developed by well-known artist Dawn Oman to help launch the fund. The logo is symbolic of the team of individuals who work together to help children in need. These people include foster parents, social workers, teachers, doctors, mentors and all those who help children soar above their challenges and become all that they can be.

The Foster Family Coalition of the NWT is a unified voice, dedicated to improving the quality of life for children and youth in foster care by supporting foster families' well-being. It is a non-profit founded in 2001.



## THE NOMINATING COMMITTEE

The Yellowknife Community Foundation Board of Directors is selected according to its bylaws by a Nominating Committee consisting of the Mayor of the City of Yellowknife, the President of the Yellowknife Chamber of Commerce, the President of the Yellowknife Ministerial Association, the Commanding Officer of the Royal Canadian Mounted Police, G Division and the Director, Aurora College, Yellowknife Campus. In alternating years, the Regional President, Yellowknife Education District #1 Northwest Territories Teachers Association or the Regional President, Yellowknife Catholic Schools, Northwest Territories Teachers Association.

## 2011 NOMINATING COMMITTEE MEMBERS

**Gordon Van Tighem** | Mayor, City of Yellowknife (Chair)

**Warren McLeod** | President, Yellowknife Chamber of Commerce

**Wade D. Blake** | Chief Superintendent, R.C.M.P., G Division

**Jim Lynn** | Yellowknife Ministerial Association

**Jane Arychuk** | Aurora College

**Edna McFaul** | Regional President, NWT Teachers Association, Yellowknife Education District #1

SUNDAY	MONDAY	TUESDAY	WEDNESDAY	THURSDAY	FRIDAY	SATURDAY
				1	2	3
4	5	6	7	8	9	10
<i>TIME CHANGE FALL BACK</i>						
11	12	13	14	15	16	17
<i>REMEMBRANCE DAY</i>						
18	19	20	21	22	23	24
25	26	27	28	29	30	



DECEMBER<sub>2012</sub>

DARREN JACQUARD  
darren@jacquard.ca



# Pat McMahon Memorial Fund

Patricia (Pat) McMahon grew up in Northern Canada and resided in Yellowknife from 1968 until her untimely death in 2008. As a Councillor of the City of Yellowknife for seven years, Pat served on all of the Council committees and as a volunteer for many community organizations. She was elected Mayor of the City of Yellowknife for three terms, serving from 1987 to 1994.

Her personal commitment to Yellowknife and the Northwest Territories resulted in appointments to many local, regional,

territorial, national and international committees and organizations over the years including President of both the Northwest Territories Association of Municipalities, and the Livable Winter Cities Association.

In 1983, Pat was presented with the NWT Tourism Award by the Government of the Northwest Territories, and in 1992 she received the Commemorative Medal of Canada 125 from

the Commissioner of the NWT on behalf of the Governor General.

The Pat McMahon Memorial Fund was established by her family to support female individuals that demonstrate community leadership in Yellowknife and civic pride, who demonstrate uniqueness in promoting Yellowknife or who wish to pursue studies in Tourism, Public Administration and/or Political Science.



## 2011 RECIPIENTS

**Amy Lizotte** ↑

A volunteer oriented, committed, empathetic and devoted Yellowknife resident who is pursuing post graduate work in Interdisciplinary Studies at Royal Roads University.



SUNDAY	MONDAY	TUESDAY	WEDNESDAY	THURSDAY	FRIDAY	SATURDAY
						1
2	3	4	5	6	7	8
9	10	11	12	13	14	15
16	17	18	19	20	21	22
			DEC 31 IS THE LAST DATE FOR A 2012 CHARITABLE TAX RECEIPT		FIRST DAY OF WINTER	
23	24 CHRISTMAS EVE	25	26	27	28	29
30	31 NEW YEAR'S EVE	CHRISTMAS DAY	BOXING DAY	AVERAGE OPENING DATE FOR THE MACKENZIE RIVER ICE BRIDGE		



JANUARY 2013

ALEXANDER LEGAREE  
contactme@coalphotography.com

# Jenny Gamble-Fournier Memorial Scholarship

Jenny Gamble-Fournier was a little girl when her family moved to Yellowknife in 1978. After graduating high school, she spent a year in Europe and then went on to complete Carleton University's journalism program, although her real passion was art history.

Jenny worked in Yellowknife briefly before returning to Europe to be with her fiancé, Chris Fournier. Jenny and Chris were married less than two months before she succumbed to bone cancer in 1999.

A talented painter and poet with passionate spirit, Jenny was very proud of her Northern roots. In

her memory, friends and family established a scholarship fund for students pursuing a post-secondary education, with an emphasis on the arts. The Fund provides annual scholarships to students of Yellowknife's Sir John Franklin High School with high levels of academic achievement, well-rounded character and wide interests.



## 2011 RECIPIENT

### Hanna Wilson

An artist, athlete, volunteer, coach, dance instructor and language enthusiast in Yellowknife. She plans to study languages and film at University.

SUNDAY	MONDAY	TUESDAY	WEDNESDAY	THURSDAY	FRIDAY	SATURDAY
		1 <i>NEW YEAR'S DAY YELLOWKNIFE INCORPORATES AS A CITY, 1970</i>	2	3	4	5
6	7	8	9	10	11	12
13 <i>FIRST DONATION MADE TO THE COMMUNITY FUND, 1994</i>	14	15	16	17	18	19
20 <i>AVERAGE DATE FOR THE MACKENZIE RIVER FERRY TO STOP OPERATION</i>	21	22	23	24	25	26
27	28	29	30	31		



FEBRUARY 2013

ELIZABETH LUCKO  
elucko@lakeheadu.ca

# Fine and Performing Arts Fund

Kids Unlimited, a Yellowknife non-profit society that offered drama, art and other recreational programs for children and youth during the 1980s and early 1990s, established a permanent Fine and Performing Arts Fund with the Yellowknife Community Foundation in 1999.

Earnings from the fund are used to support the development of NWT residents in the fine and performing arts. Scholarships are available each

year for those pursuing artistic excellence in drama, dance, music and theatre arts, including theatrical production, studio arts, film or photography.

Generous donations from the Yellowknife City Band in 2000, and the Community Television Society in 2008, added significant contributions to the original fund.

Since the first grant/scholarship was awarded in 2000, recipients have used the funding to enhance their expertise and education in many areas of the arts including carving, painting, dance, vocal and instrumental music, acting, stage makeup and special effects, screenwriting and film direction and production. Two of the Fund's recipients, Leanne Goose (2007) and Tiffany Ayalik (2006) performed for the NWT Cultural program at the 2010 Olympic Winter Games in Vancouver.



## 2011 RECIPIENTS

- Amélie Duval** ↑  
Musician, actor, painter and photographer from Yellowknife
- Dana Sipos Randor** ↗  
Singer, songwriter and performer from Yellowknife
- Antoine Mountain** ↓  
Internationally known Dene artist and painter from Fort Good Hope, NWT



SUNDAY	MONDAY	TUESDAY	WEDNESDAY	THURSDAY	FRIDAY	SATURDAY
					1	2
3	4	5	6	7	8	9  <small>YELLOWKNIFE COMMUNITY FOUNDATION ANNUAL VALENTINE'S GALA</small>
10	11	12	13	14  <small>VALENTINE'S DAY</small>	15	16
17	18	19	20	21	22	23
24	25	26	27	28		



MARCH<sub>2013</sub>

DAVE BROSHA  
[www.davebrosha.com](http://www.davebrosha.com)

# David Sutherland Memorial Fund

David learned to cross-country ski in Inuvik in the 1960s after arriving from BC to start a job with the Government of the Northwest Territories. He learned to ski from oblate priest Father Mouchet and was involved with the internationally-recognized Territorial Experimental Ski Training (TEST) Program in Inuvik. After moving

to Yellowknife, he worked with the local and territorial ski programs coaching young skiers.

David thought that cross-country skiing was an excellent sport for young people. Along with the fitness aspects of physical training, he believed that skiing developed other skills – discipline, goal setting, and perseverance.

David Sutherland passed away on Oct. 12, 2004, from cancer. This fund was established in David’s memory by the Sutherland family and the Yellowknife Ski Club, so that he could continue to help young northern skiers.



## 2011 RECIPIENTS

### YK Ski Club ↑

A grant was provided to support the Yellowknife Ski Club’s Track Action Skiers Program. The initiative helps younger skiers, not eligible to compete at the Arctic Winter Games, gain competition experience. Athletes must demonstrate a commitment to the sport and a dedication to their training program..

SUNDAY	MONDAY	TUESDAY	WEDNESDAY	THURSDAY	FRIDAY	SATURDAY
					1	2
3	4	5	6	7	8	9
10 <i>TIME CHANGE SPRING AHEAD</i>	11	12	13	14	15	16 <i>MARCH BREAK BEGINS</i>
17 <i>ST. PATRICK'S DAY</i>	18 <i>YK ASSOCIATION FOR COMMUNITY LIVING INCORPORATED, 1974</i>	19	20 <i>FIRST DAY OF SPRING</i>	21	22	23
24	25	26	27	28	29	30
31					<i>GOOD FRIDAY</i>	



APRIL 2013

NIGEL FEARON  
me@nigelfearon.ca

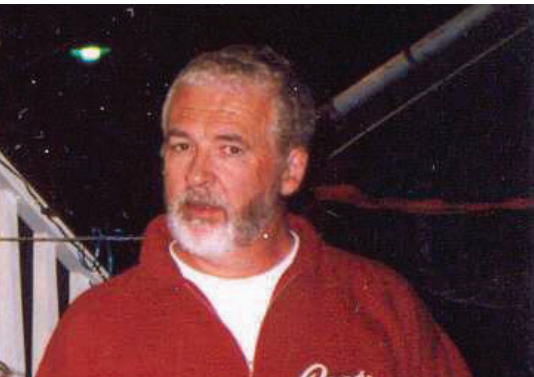


# Northern Aviation Scholarship Fund

Originally established to commemorate the life of John Bidwell, and more recently the memory of Jim Smith and Matthew Bromley, this fund is intended to provide scholarships to individuals who aspire to a career in aviation in the north.

## John Ernest Bidwell ↓

Born in Scotland, John came to the NWT for the first time in 1981 flying a single Twin Otter for Lamb Air. Over the years he worked for La Ronge Aviation, Latham Island Airways and operated Imperial Aviation and then flew as a contract pilot for North-Wright Airways, Arctic Sunwest and Adlair Aviation Ltd. He became the base manager and chief pilot for Summit Air in Yellowknife. His life was taken in a tragic accident near Port Radium NWT, on October 8, 2000.



## James Smith ↙

Jim grew up in Winnipeg, and moved to Rankin Inlet in the 1970s to fly for Keewatin Air. Jim stayed in Rankin Inlet for seven years, moved to Churchill to fly King Airs and DC-4s for Air Manitoba. In the late '80s he worked for Kenn Borek Air, landing the first DC-4 on wheels in Antarctica. He was Chief Pilot for Buffalo Airways when he died in December 2003.

## Matthew Bromley →

Matthew Bromley grew up in Yellowknife and always wanted to fly. He was a recipient of the GNWT aviation bursary and learned to fly at the Aurora College flight school in Fort Smith. In August of 2004, he began to work at Air Tindi. Like many pilots he started on the ramps and with cargo. Over time he moved up to flying and became certified to pilot multi-engine aircraft on skis and floats. Matthew lost his life in a tragic accident 40 km from Lutsel K'e on the afternoon of August 4, 2011.



SUNDAY	MONDAY	TUESDAY	WEDNESDAY	THURSDAY	FRIDAY	SATURDAY
	1  <i>EASTER MONDAY LAST DAY OF MARCH BREAK</i>	2	3	4	5	6
7	8	9	10	11	12	13
14	15  <i>SIDE DOOR RECEIVED FIRST GRANT FROM YCF, 1996</i>	16	17  <i>AVERAGE DATE FOR MACKENZIE RIVER ICE BRIDGE TO CLOSE</i>	18	19	20
21	22  <i>EARTH DAY</i>	23	24	25	26	27
28	29	30				



MAY 2013

RILEY VELDHIJZEN  
rileyveldhuizen@hotmail.com

# NWT Mining Heritage Trust Fund

The NWT Mining Heritage Society is dedicated to the preservation of mining heritage in the NWT.

The Society is currently working to develop the Mining Heritage Centre on the former Yellowknife Giant Mine site. The new Centre has the potential to be an engaging and informative heritage and interpretive location. It will offer tremendous

tourism and educational possibilities regarding geology, mining, and mineral exploration in the NWT. Visitors can be educated and entertained with fascinating stories, exhibits and displays of the north's geology and mining heritage. The Centre will also be home to the extensive Walter Gibbins Rock and Mineral Collection.

The NWT Mining Heritage Trust Fund was established by the Society to assist with funding for facilities operated by the Society such as the NWT Mining Heritage Centre.

## 2011 RECIPIENTS

The Mining Heritage Society purchased copies of CBC's *Geologic Journey* for all NWT Schools with a grant from the Foundation.



# David J. Ramsden Memorial Scholarship

Dave had a long association with the North, working in Rankin Inlet, Cambridge Bay, Inuvik, Hay River and Yellowknife. His career with the Government of the NWT included appointments as the Deputy Minister of Health and Social Services, Deputy Minister of Municipal and Community Affairs, and senior management positions with Public Works and Services and the NWT Power Corporation, as well as Secretary to Cabinet.

The David J. Ramsden Memorial Scholarship was established in 2011 to assist Northwest Territories residents who are entering their first or subsequent years of graduate studies at the University level.



SUNDAY	MONDAY	TUESDAY	WEDNESDAY	THURSDAY	FRIDAY	SATURDAY
			1	2	3	4
5	6 <small>YK SEARCH AND RESCUE INCORPORATED, 1999</small>	7	8	9	10	11
12 <small>MOTHER'S DAY</small>	13 <small>AVERAGE DAY FOR MACKENZIE RIVER FERRY TO RESUME OPERATION</small>	14	15	16	17	18
19	20 <small>VICTORIA DAY</small>	21	22	23 <small>YELLOWKNIFE ROTARY CLUB INCORPORATED, 1979</small>	24	25
26	27	28	29	30	31	



JUNE<sub>2013</sub>

MAIK TONDEUR-ZETZMANN  
[www.flickr.com/chrismafoto](http://www.flickr.com/chrismafoto)

# Lilly Borges-Oldham Second Language Scholarship Fund

Born to German immigrant parents, Lilly knew first hand the importance of a second – and third – language. Her passion for life, languages and learning were clearly evident in her world travels with her husband Stuart, and in her exceptional contributions to education in the Northwest Territories.

Lilly inspired a generation of young Yellowknifers with her passions for languages, cultures and lifelong learning. She was dedicated to her students, her colleagues and her profession, and was instrumental in the development of the french immersion program in Yellowknife. Lilly will be remembered for her energy, enthusiasm, courage, strength and 'no nonsense' approach to life.

Lilly died two days before her 49th birthday after a courageous battle with cancer.

The Lilly Borges-Oldham Second Language Scholarship Fund was established to assist individuals interested in studying second languages and cultures at a post-secondary institution.



## 2011 RECIPIENTS

**Nicole Bonnell** ↑

Studying at Dalhousie University in Halifax, Nicole is a french immersion graduate from École Sir John Franklin. She is also studying Spanish and has fond memories of Madam Oldham's special contribution to Yellowknife.

**Paulina Ross** ↓

Studying at Mount Royal University in Calgary, Paulina is a french immersion graduate from École Sir John Franklin. She also has a good understanding of German and has used her language skills internationally and in Yellowknife with her employers.



SUNDAY	MONDAY	TUESDAY	WEDNESDAY	THURSDAY	FRIDAY	SATURDAY
						1  YELLOWKNIFE COMMUNITY FOUNDATION INCORPORATED, 1993
2	3	4	5	6	7	8
9	10	11	12	13	14	15
16  FATHER'S DAY	17	18	19	20	21  ABORIGINAL DAY FIRST DAY OF SUMMER	22
23  30	24	25	26	27	28	29  FINE AND PERFORMING ARTS FUND CREATED, 1999



JULY 2013

DONNA DOOLEY  
ddstnt@theedge.ca

# Lorraine Minish-Cooper Memorial Fund

Lorraine Minish-Cooper came to Yellowknife in 1979 as an articling student-at-law and stayed to marry, raise a family and practice law until breast cancer took her life in 2002, after a long and valiant struggle.

Lorraine enjoyed a distinguished legal career and served as a Director and then President of the NWT Law Society.

Lorraine also gave her time and energy to the Yellowknife Speedskating Association, in support of her daughters, to the Yellowknife Choral Society, where she found great personal joy, and to the Yellowknife Community Foundation, where she was a Director and Treasurer in 2001/2002.

It is Lorraine's complete devotion to her family and her insatiable passion for gardening that will be especially remembered by all those who knew

and loved her. It was Lorraine's wish that a Garden of Hope, planted in her memory, would be a place of peace and comfort, especially for those with breast cancer and their families. The Garden was substantially enlarged and enhanced in 2010 and 2011, and was included in the royal walkabout when Will and Kate, the Duke and Duchess of Cambridge, visited Canada in July 2011.



## 2011 DONATIONS

### In Memory Of

Matthew Bromley	Harry O'Keefe
Donald M. Cooper	Dave Pelletterio
Maureen Crowe	Sharon Sorsdahl
Trevor Jonasson	Nicole Stacey
Caleb Kidd	Campbell Young

### In Honour Of

Gordon & Karen Hamre	John & Louise Vertes
----------------------	----------------------

## DONATIONS TO VARIOUS FUNDS PRIOR TO 2011

### In Honour Of

The birth of Shiri MacPherson-Casebeer	Robert & Loretta Gamble
The 65th birthday of Connie Landstrom	The 40th wedding anniversary of Bill & Joanne Rose of Toronto

### In Memory Of

Tom Downes	Dr. Everett Cooper
Gwen Forbes	Denis Crane
Clementine Salo	Mrs. A. Dent
Wayne Sweeney	Chris George
John Tumchewics	Jack Grainge
Ivor Dent	Peter G. Hendrick
Glenn Kornichuck	Elsie Makarenko
Paul Tanner	John Alfred Meyer
Clem St. Croix	Mame Remnant
Evelyn Hall	Evelyn (Toby) Taylor
Irma Weaver	Elizabeth MacLaren
Glenn Alexander	Sperry SRN
Hermione Anderson	Sisko Kaarina Emery
Shorty Brown	

SUNDAY	MONDAY	TUESDAY	WEDNESDAY	THURSDAY	FRIDAY	SATURDAY
	1	2	3	4	5	6
	CANADA DAY					
7	8	9	10	11	12	13
		NUNAVUT DAY				
14	15	16	17	18	19	20
21	22	23	24	25	26	27
28	29	30	31			



AUGUST 2013

DAVE BROSHA  
[www.davebrosha.com](http://www.davebrosha.com)



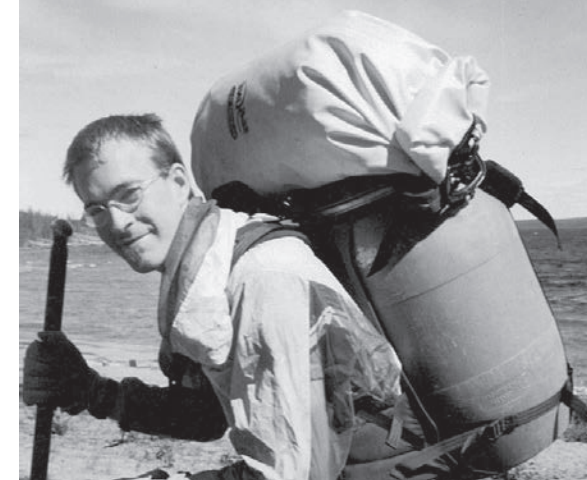
# Chris Argue Memorial Fund

Chris was born in Churchill, Manitoba, in 1976, and was a proud Yellowknifer from age four. Chris loved his family and friends and enjoyed cabin life at Prelude Lake. Chris was active in student government at Sir John Franklin High School and was instrumental in starting its Dry Grad.

At the time of his accidental death at the age of 25, he was studying engineering at the University of Alberta.

Chris had a passion for life and a deep love of the wilderness. Fearless but thorough in tackling new challenges, he brought leadership, intelligence,

ingenuity and concern for others to everything he did. Chris' family has chosen to honour his memory by establishing a fund to promote the development of leadership skills and self-confidence in self-propelled wilderness travel in the NWT.



## 2011 RECIPIENT

### Taiga Camp ↑

In 2011, Taiga Adventures received a Chris Argue Memorial Fund grant to support their new summer camp program designed specifically for NWT teenage girls. The vision of Taiga is 'to inspire a generation of courageous young northern female leaders'.

SUNDAY	MONDAY	TUESDAY	WEDNESDAY	THURSDAY	FRIDAY	SATURDAY
				1	2	3
4	5 <i>CIVIC HOLIDAY</i>	6	7	8	9	10
11	12	13	14	15	16	17
18	19	20	21	22	23	24
25	26	27	28	29	30	31



SEPTEMBER 2013

DAVE BROSHA  
[www.davebrosha.com](http://www.davebrosha.com)

# Elaine (Sweet) Whitford Scholarship

Born in Alberta, Mary Elaine (Sweet) Whitford first came north in 1964 as a university student and after attaining her Masters in Social Work, returned in 1965 to work in Fort Smith, where she also met her future husband, Tony Whitford. Elaine and Tony raised their three sons in the Northwest Territories. Elaine was lost to cancer in 2003.

Elaine's thirty-two year career in social work was marked by a passion and commitment that made her a role model for many young northerners pursuing a career in the field. During her life, Elaine contributed greatly to

the well-being of Northerners and was influential in encouraging and assisting many of them to remain in school and pursue a post-secondary education.

Former Commissioner Tony Whitford and his family established the fund to recognize the contribution Elaine made to the North, and build on her legacy by supporting NWT post-secondary students who want to make a difference and make our communities stronger.

The Elaine (Sweet) Whitford Scholarship was established to support NWT residents pursuing post-secondary studies in social work or nursing. Applicants must demonstrate an understanding of the important role that social workers and nurses play in northern community development and an understanding of the importance of volunteerism to communities. A scholarship was not awarded in 2011.



## 2011 CORPORATE SUPPORTERS

- Avery, Cooper & Co.
- Birchwood Gallery/YK Tix
- Canarctic Graphics
- Coal Photography
- Creative Basics
- Explorer Hotel
- Global Storm IT
- Janet Pacey Design and Illustration / Signed
- Lawson Lundell LLP
- Kopykat North
- M&M Meats
- MacKay LLP
- RTL Robinson Enterprises Ltd.
- Shoppers Drug Mart
- Stanton Territorial Hospital Foundation
- Trinity Helicopters
- Yellowknife Seniors Society

SUNDAY	MONDAY	TUESDAY	WEDNESDAY	THURSDAY	FRIDAY	SATURDAY
1	2 <i>LABOUR DAY</i>	3	4	5 <i>FIRST GOLD BRICK POURED AT CON MINE, 1938</i>	6	7
8	9	10	11	12	13	14
15	16	17	18	19	20	21 <i>FIRST DAY OF FALL</i>
22	23	24	25	26 <i>YELLOWKNIFE SKI CLUB FOUNDED, 1968</i>	27	28
29	30					



OCTOBER<sub>2013</sub>

STEPHANIE YUILL  
yuilltide@yahoo.ca

# Yellowknife Community Fund

A gift to the Yellowknife Community Fund enables the Foundation to fulfill its mission to enhance the quality of life of the citizens of Yellowknife. Founded in 1993, the Fund awards grants in the areas of social services, health, arts, education, and the environment.

The fund pools individual contributions so that collectively they can make a significant social impact.

## 2011 RECIPIENTS

**Yellowknife Branch of the Canadian Hard of Hearing Association** | 2011 National Conference hosted in Yellowknife and hearing assist equipment for the Baker Centre

**Yellowknife Ski Club** | specialized equipment for ski trail grooming

**Range Lake School** | accessible playground structure

**St Pat's Youth Ministry** | sport program equipment

**Weledah Catholic School** | equipment for digital technology literacy program

**Yellowknife Seniors Society** | Lunch with a Bunch and new kitchen appliances for the Baker Centre

**City of Yellowknife** | Bicycle Safety Rodeo

**NWT Society for the Prevention of Cruelty to Animals** | support for new animal shelter

**NWT BoardSport Association** | equipment for Bristol Pit snowboard hill

**NWT Soccer Association** | Yellowknife Multiplex trophy case

**Ruff Diamonds Dog Agility Club** | competition equipment

Donors may make contributions to the Fund in their own name, in the name of a loved one they wish to be remembered, in the name of another person to mark a special occasion or as a gift. Donors may direct the Foundation to issue the tax receipt to themselves or to the people in whose honour they are making the contribution.

The Foundation solicits and accepts grant applications from organizations that meet certain guidelines. A Grants Committee evaluates applications and makes its recommendations to the Board of Directors. The Board awards grants four times annually, within the parameters of the funds available, and the mission of the Foundation.



SUNDAY	MONDAY	TUESDAY	WEDNESDAY	THURSDAY	FRIDAY	SATURDAY
		1	2	3	4	5
6	7	8	9	10	11	12
13	14	15	16	17	18	19
20	21 <i>THANKSGIVING</i>	22	23	24	25	26
27	28	29	30	31 <i>HALLOWEEN</i>		





NOVEMBER<sub>2013</sub>

KEVIN KLINGBEIL  
[www.klingbeilphotography.com](http://www.klingbeilphotography.com)

# Gary Robinson Memorial Fund

Gary Robinson was born in Yellowknife in 1981. During his school years, he was eager to begin working for his family's transportation and construction business. Upon graduating from Sir John Franklin High School, he focused on his career, gaining a broad range of skills and earning the respect of those with and for whom he worked.

The passion Gary felt for his work, and his play was

intertwined with his love of Yellowknife and the north. There was no place he would have rather lived. He enjoyed every season, especially sharing moments with family and friends while camping, fishing, skidoing and snowboarding.

Preparedness was always important to Gary, who strived to be self-sufficient with the right skills and equipment. He was quick to help others and quicker yet to make little of the deed.

In the winter of 2004, at the age of 23, Gary was accidentally killed doing the work he loved. His memorial fund provides financial support to those individuals or organizations involved in search and rescue, recovery or emergency response activities. Through this fund, it is his family's hope that Gary will continue to protect and help the people of the place that he loved so much.



## RECIPIENTS 2011

### Yellowknife Search and Rescue

In 2011 the Foundation provided a grant to the Yellowknife Search and Rescue Society to assist with the purchase of a Life Blanket system for transporting hypothermic patients and specialized computer and GPS equipment for managing search and rescue operations.

## THE ADMINISTRATION ENDOWMENT FUND

The Yellowknife Community Foundation is administered by a volunteer board of directors who are assisted with day-to-day operations by volunteers and donated professional and administrative services. By operating out of donated office space the Foundation is able to minimize its administrative costs and maximize its grant-making ability. However, a number of operating expenses simply cannot be avoided, such as the cost of postage, printing and other office expenses. As the Foundation cannot spend the capital of any charitable donation it receives, it must pay for these expenses from the interest earned on donations to its Administration Endowment Fund.

Donations to this Fund will help to ensure the Foundation has the resources to carry out its mandate.

SUNDAY	MONDAY	TUESDAY	WEDNESDAY	THURSDAY	FRIDAY	SATURDAY
					1	2
3	4	5	6	7	8	9
TIME CHANGE FALL BACK						
10	11	12	13	14	15	16
	REMEMBRANCE DAY					
17	18	19	20	21	22	23
24	25	26	27	28	29	30



DECEMBER<sub>2013</sub>

RILEY VELDUIZEN  
rileyveldhuizen@hotmail.com



# Jonas Konge Memorial Fund

Jonas Konge, “our little Viking”, was born with a congenital heart defect on May 17, 2007. When complications arose during one of his many open heart surgeries in Edmonton, doctors were forced to remove his heart; a medical first. His body was fully supported by specialized medical equipment for ten weeks while he waited for a new heart. Despite everything he still enjoyed listening to books, playing with puzzles and having snuggle time with his parents. Jonas died five days before his third birthday surrounded by family and friends.

Jonas was a very special little boy, joyful and compassionate beyond his years, who touched the lives of everyone who knew him in his short time with us.

The Konge family created the Jonas Konge Memorial Fund to give back to the community of Yellowknife which offered such tremendous support to them throughout Jonas’ life.

The fund will give annual scholarships to students in their second year of Medicine or Nursing, preferably with an emphasis in Pediatrics and Neo-natal care.

The Fund will also award grants to the Stanton Territorial Hospital Foundation to fund and support the purchase of new equipment or programs in the area of Pediatrics or Neo-natal care.



## 2011 RECIPIENTS

### Breanne Grayston ↑

Breanne is pursuing her post-secondary accreditation as a Diagnostic Medical Sonographer at the Northern Alberta Institute of Technology in Edmonton. She plans to return to Yellowknife to work in the field when she graduates.

SUNDAY	MONDAY	TUESDAY	WEDNESDAY	THURSDAY	FRIDAY	SATURDAY
1	2	3	4	5	6	7
8	9	10	11	12	13	14
15	16	17	18	19	20	21
			DEC 31 IS THE LAST DATE FOR A 2013 CHARITABLE TAX RECEIPT			FIRST DAY OF WINTER
22	23	24	25	26	27	28
		CHRISTMAS EVE	CHRISTMAS DAY	BOXING DAY		
29	30	31				
		NEW YEAR'S EVE				



JANUARY 2014

MAIK TONDEUR-ZETZMANN  
[www.flickr.com/chrismafoto](http://www.flickr.com/chrismafoto)

# Walter Gibbins Memorial Fund

Walter Gibbins was born in Winnipeg in 1940, and received his B.Sc. from the University of Manitoba, M.Sc. from Northwestern University (Illinois), and Ph.D. from MacMaster University. He worked for the NWT Geological Division of the Department of Indian Affairs in Yellowknife from 1974 until his death in 1992.

Walter was a very well-known figure in geology and mining circles. He was a district

geologist and part of his work involved training northerners in geology and prospecting. He specialized in soapstone and other carving stone, and worked closely with Inuit carvers from many NWT communities and settlements. Walter also published several papers on geology, primarily the geology of the NWT. Walter's interest in geology is perhaps best expressed in the extensive rock and mineral collection he accumulated throughout his career.

The Walter Gibbins Memorial Fund, launched in 2008 with a \$25,000 donation from the Walter Gibbins Trust Fund, was established for the ongoing maintenance of the Walter Gibbins Rock and Mineral Collection, and to provide geological education and awareness in the NWT. The Collection is maintained by the NWT Mining Heritage Society and will ultimately be housed in the NWT Mining Heritage Centre.



Photo courtesy of Moira Cameron

# Aurora College Scholarship

Established in 2009, this scholarship provides support for students from Yellowknife attending the Yellowknife / North Slave Campus of Aurora College. Applicants must be registered in a second or subsequent year of study and demonstrate their commitment to making Yellowknife a better place to live through their volunteer and professional activities.

## 2011 RECIPIENTS

### Tanya Silke

Bachelor of Science in Nursing Program, Aurora College

### Megan Paul

Bachelor of Science in Nursing Program, Aurora College



SUNDAY	MONDAY	TUESDAY	WEDNESDAY	THURSDAY	FRIDAY	SATURDAY
			1 <i>NEW YEAR'S DAY YELLOWKNIFE INCORPORATES AS A CITY, 1970</i>	2	3	4
5	6	7	8	9	10	11
12	13 <i>FIRST DONATION WAS MADE TO THE COMMUNITY FUND 1994</i>	14	15	16	17	18
19	20 <i>AVERAGE DATE FOR THE MACKENZIE RIVER FERRY TO STOP OPERATION</i>	21	22	23	24	25
26	27	28	29	30	31	



FEBRUARY 2014

KEVIN KLINGBEIL  
[www.klingbeilphotography.com](http://www.klingbeilphotography.com)

# Con Employees' Benevolent Fund

In 2011 the Con Employees' Benevolent Society established a scholarship fund to assist individuals pursuing a trade or professional career in the mining industry, or an industry related to mining.

The Con Employees' Benevolent Society was founded in 1955 as a wage replacement plan providing benefits to its members for non-work related sickness or accidents. It was jointly funded and administered by the owners of Con Mine (CM&S later known as Cominco) and its general roll employees.

As the Society evolved, joint funding continued, but the employees took over full responsibility for administration. To help ensure the sufficient funding of the Society, the employees added a separate employee funded Sick Plan.

A board of directors made up of employees from both surface and underground, simple rules and very low administration costs kept the Society in good financial condition. As new owners took over Con Mine they found the Benevolent Society to be an attractive alternative to more conventional insurance plans and the Society was always able to provide consistent benefits to its members until the last were laid off in the fall of 2006 when final operations ceased and Con Mine closed.

The scholarship is open to high school graduates residing in the City of Yellowknife, NWT that demonstrate an intent to pursue a trade or professional career in the mining industry or an industry related to mining such as millwright, geo-technical engineer, environmental studies, geology or heavy equipment operator.



SUNDAY	MONDAY	TUESDAY	WEDNESDAY	THURSDAY	FRIDAY	SATURDAY
						1
2	3	4	5	6	7	8
9	10	11	12	13	14	15
					VALENTINE'S DAY	YELLOWKNIFE COMMUNITY FOUNDATION ANNUAL VALENTINE'S GALA!
16	17	18	19	20	21	22
23	24	25	26	27	28	



MARCH<sub>2014</sub>

NIGEL FEARON  
me@nigelfearon.ca

# Enough Talk, Hurry Up and Do It Already Arts Scholarship

Dustin Milligan →, TV and film actor originally from Yellowknife, initiated the 'Enough Talk, Hurry Up and Do It Already Arts Scholarship' to help Sir John Franklin High School graduating students pursuing post-secondary studies in the dramatic arts, film or writing.

Applicants must demonstrate a strong work ethic, talent in their chosen field and a passion for drama, film or writing-related studies and activities both in school and in the community.

Since the inaugural scholarship was awarded in 2007, recipients have gone on to further their

education in music, acting for stage and screen, film and video production, and dance.

Dustin continues to attend the Sir John Franklin High School graduation ceremony each year to personally present the annual scholarship award to the chosen recipient.



## 2011 RECIPIENTS

### Samantha Hefford ↑

Samantha discovered her passion for combining photography, art and video editing through personal experimentation, classroom studies, and hands-on work in the computer labs and television studio at Sir John Franklin High School. She is studying at the Alberta College of Art and Design in Calgary.

SUNDAY	MONDAY	TUESDAY	WEDNESDAY	THURSDAY	FRIDAY	SATURDAY
						1
2	3	4	5	6	7	8
9	10	11	12	13	14	15
TIME CHANGE SPRING AHEAD						
16	17	18	19	20	21	22
	ST. PATRICK'S DAY	YK ASSOCIATION FOR COMMUNITY LIVING INCORPORATED, 1974		FIRST DAY OF SPRING		
23	24	25	26	27	28	29
	30	31				



APRIL 2014

DAVE BROSHA  
[www.davebrosha.com](http://www.davebrosha.com)



# Mary Beth Miller Memorial Fund

Mary Beth Miller was born August 24, 1976, and moved to Yellowknife with her family when she was six years old.

Always an athlete, Mary Beth was involved in many sports and activities throughout her youth. Her parents supported her pursuits and provided whatever assistance they could to the sporting clubs Mary Beth was participating in.

Mary Beth was an enthusiastic and spirited athlete – constantly challenging herself and her teammates to strive to achieve their best, although it was more important to Mary Beth that people took pleasure in the experience.

Mary Beth died July 2, 2000, as a result of a bear attack while training at the Miriam Bedard Biathlon Centre in Val Cartier, Quebec.

Mary Beth’s family established the Mary Beth Miller Memorial Fund to support athletes who demonstrate the qualities that Mary Beth exhibited in her approach to life.



## 2011 RECIPIENT

### John Blyth

John’s passion for kayaking runs deep. He grew up in Fort Smith watching the world famous rapids of the Slave River and knew that he just had to be a kayaker. His plans include trips on the Thelon, South Nahanni, Coppermine, Back and the Horton rivers and competing at the national level in Canada.

SUNDAY	MONDAY	TUESDAY	WEDNESDAY	THURSDAY	FRIDAY	SATURDAY
		1	2	3	4	5
6	7	8	9	10	11	12
13	14	15	16	17	18	19
20	21	22	23	24	25	26
27	28	29	30			

*SIDE DOOR RECEIVED  
FIRST GRANT FROM YCF,  
1996*

*AVERAGE DATE FOR  
MACKENZIE RIVER ICE  
BRIDGE TO CLOSE*

*GOOD FRIDAY*

*EASTER MONDAY*

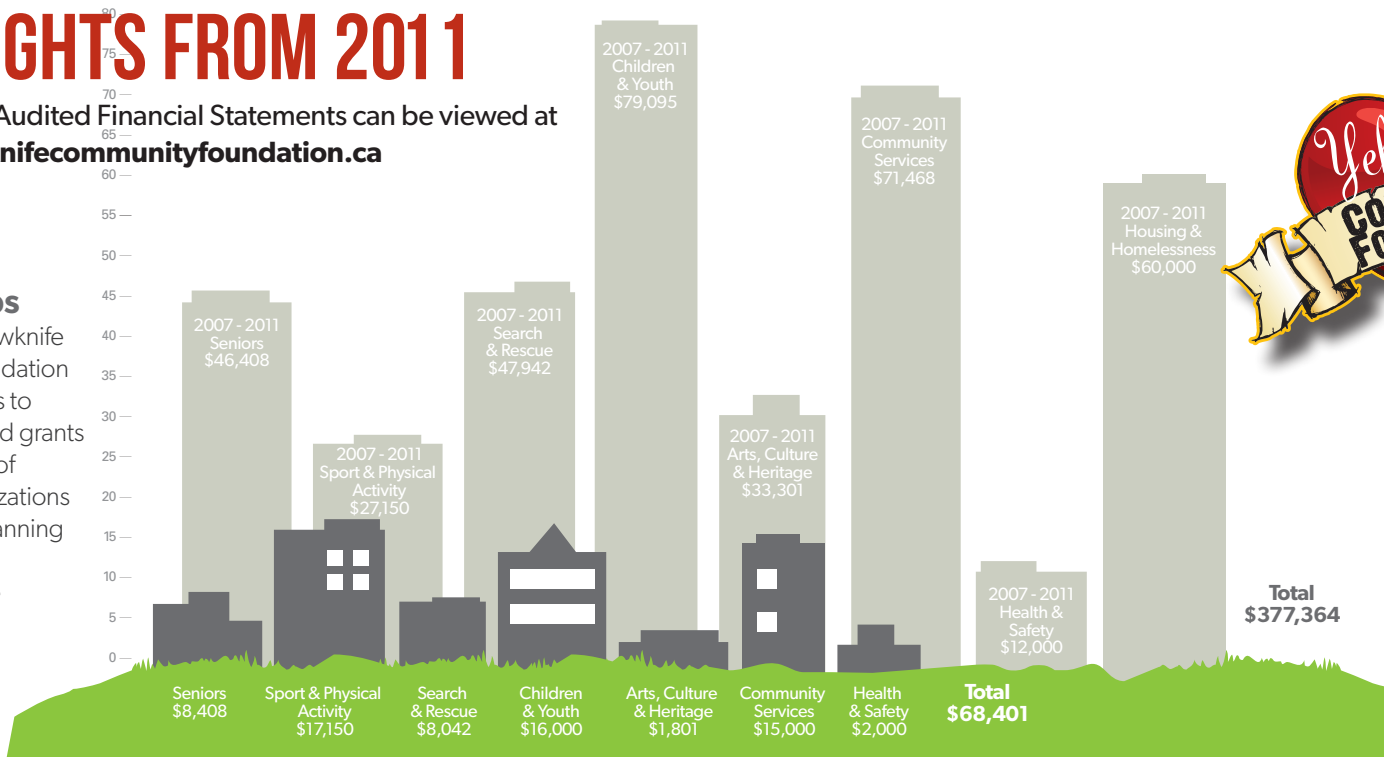
*EARTH DAY*

# HIGHLIGHTS FROM 2011

Detailed 2011 Audited Financial Statements can be viewed at [www.yellowknifecommunityfoundation.ca](http://www.yellowknifecommunityfoundation.ca)

## Grants and Scholarships

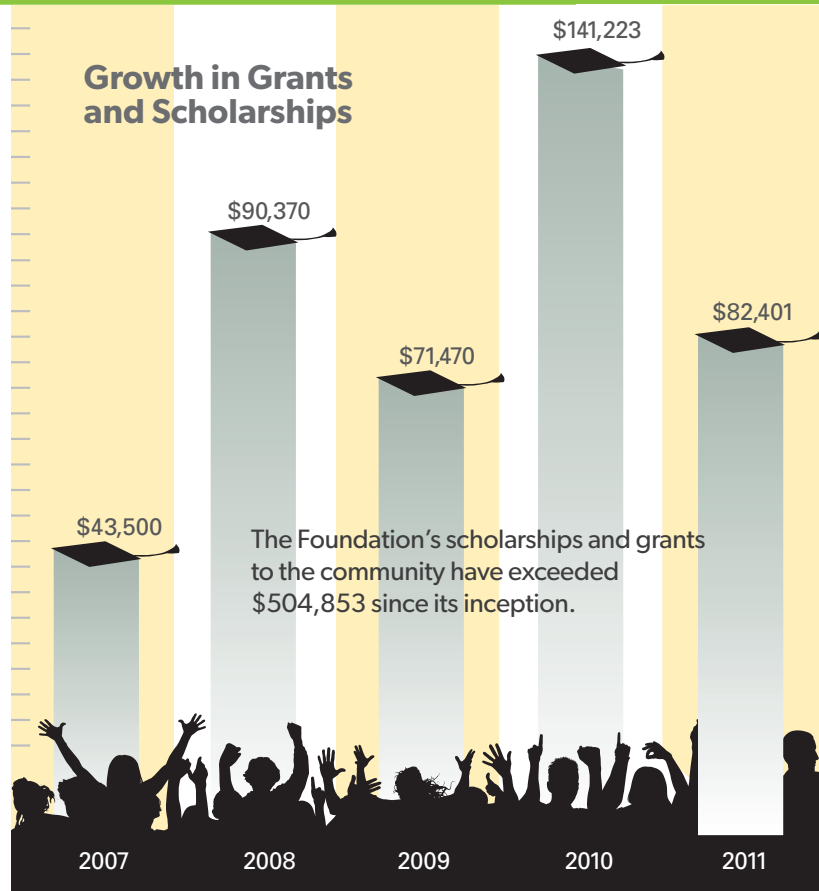
In 2011, the Yellowknife Community Foundation gave scholarships to 14 individuals, and grants to a wide variety of charitable organizations in Yellowknife spanning the many areas supported by the Foundation.



## Growth in Investments Under Management

The Foundation administered over \$3.1 million in assets in 2011 (nearly \$1.2 million in assets greater than five years ago) thanks in part to the generous bequest of a long-time donor who remembered the Foundation in his will.

The Foundation maintains a conservative investment policy to ensure its capital is protected even in tough economic times. The value of the Foundation's investments continue to grow.



## Growth in Grants and Scholarships

The Foundation's scholarships and grants to the community have exceeded \$504,853 since its inception.

# VALENTINE'S 'DANCE THE AURORA' GALA

'Dance the Aurora - Forever in our Hearts 2012' - the Foundation's major fundraiser was a resounding success again, selling out weeks in advance.

Well over 200 people attended, bidding on silent and live auction items. We were honoured to have former Commissioner of the NWT, Tony Whitford and Mike Olson, Director of Sales for First Air, as our auctioneers. The evening was capped off with a draw for a diamond valued at \$19,500, donated by Diavik Diamond Mines and Crossworks.

The Gala raised over \$47,000 proving once again that Yellowknifers are generous and caring people who support the work of the Foundation. The proceeds will be used to assist many great projects in our community for years to come. Special thanks to our main sponsors, Diavik Diamond Mines Inc., First Air, and The Explorer Hotel.

Thank you to all of the sponsors and volunteers that made the event such a huge success!

Watch for ads in the fall of 2012 for 2013 tickets! Purchase them before Christmas and save!

# 2011 DONORS

5450 NWT Ltd.	Bev Bowden	Pietro & Barbara de Bastiani	Executive	Chris & Ruth Johnston	Randy McBride & Susanne Iyago	Jim & Maureen Ranahan	John Stephenson & Karen Johnson	Shane Wasylucha
Dick & Loretta Abernethy	Braden-Burry Expediting Ltd.	Jeff Denomme	Rachael Gray	David Jolliffe	Doug & Sue McCannan	Ivan Rand	Meika Stewart	Joanne Watson
Hassan & Charlene Adam	Karen & Yvan Brien	Charles & Eileen Dent	Kathleen Greenaway	Martin Jones	Kevin McCormick	Patricia Rapley	Bill Stirling	S. Watson
Mike & Ruth Adamchick	Barb Bromley	Dr. Kenneth Dent	Shawn Greig	Ron & Nancy Kapicki	Heather McCulloch	Christine Raves	Rod Stirling	Bronwyn Watters
Air Tindi Ltd.	Stuart & Leslie Bromley	Brian Derrick	Bert Griffin	Kavanaugh Brothers Ltd.	Kenneth & Robert McDonald	Red Apple Restaurant	Rod & Tanis Stirling	Gordon & Barbara Weatherby
Christopher Aitken	Bromley & Son Ltd.	Roy Desjarlais	Linda Grimmer	J. Kelly	McInnes / D'Hont Family	Gerhard & Ruth Reimann	Don Strang	Ken Weaver
Eric Aitken	Terry & Diane Brookes	Lois Doiron	Quinn & Ginny Groenheide	KFC Yellowknife	Courtney McKiel	J. Edward Richard & Shona M. Hudson	Jim Strowbridge	Ray & Pat Weber
Marc & Sandra Aitken	Lynne & Gustav Bruhns	Daryl & Cindy Dolynny	Paul Guy	Heather Kidd	Laura McLeod	Christopher & Terena van Genne Robb	Subway Thrashers Hockey Team	Wilda Wedgerfield
Shea Alain	John & Rhonda Buckland	Ken Dragon	Ann Hall	Mary King	Robert McLeod	Debra W. Robinson	Aiko Sutherland	Marc & Linda Whitford
Denis Alain & Donna Nash	Carl Bulger	Blair & Linda Dunbar	Hilya Hall	Kingland Ford Yellowknife Ltd.	Murray McMahan	Janet & Marvin Robinson	Glenn Tait	Mildred Wilke
Mary Lou & Robin Ambrose	John Bunge	Scott R. Dunbar	Jackie Hall	Brian Klengenber	Susan & Russell Mercredi	Rick & Roxanne Robinson	Brett Talbot	Gwendolyn Williams
Christine Anderson	Linda & Eric Bussey	Stephen J. Dunbar	Maureen Hall	Katherine & Steven Klose	Sally Meserah	Floyd Roland	Abe Theil	Judy Williams
Jeff & Debra Anderson	Cactus Holdings Ltd. (M&M Meats)	Tom Dwyer	Terry Hall	Niels Konge	Marguerite (Peggy) Michell	Kirk & Lisa Ropson	Sasha Ross	Tom Williams
Arctic Farmer	Kenneth & Mary-Lou Caissie	Elite Commercial Flooring Ltd.	Thomas Hall	Paolo Konge	Kelly & Robert Milazzo	Sasha Ross	Alain Rossignol	Rick Wind
John & Marsha Argue	Aaron Callas	Energy Wall & Building Products	David & Kate Hamilton	Renee Lelievre & Niels Konge	Richard Morland	Alain Rossignol	Carl Rossignol	Sonja Vernon Wood
Alex & Sheila Arychuk	Flo Campbell	Mike Engie	Duncan Hamre	Valerie Krisch	Donna Mulders	Carl Rossignol	Rotor Linx Holdings	Dr. Margaret Anne Woodside
Peter & Teri Arychuk	Ian & Joan Campbell	Enviropower Inc.	Gordon & Karen Hamre	Margaret Melhorn & John Laratta	Sharon Nason	Jack Rowe	Owen Rowe	Greg Works
Rod Kirkwood & Sandy Auchterlonie	Myles Cane	Essential Helicopters	Hand Family	Marg Laserich	Nav Canada	Laurie Sarkadi	Laurie Sarkadi	Sandra J. Wowk
Annette Austin	Rob Carroll	Michael & Adriana Ewen	Joseph Handley	Paul Laserich	Norman Nendsa	Mike Scott	Leah Seaman	Cheryl Wray
Peter Austin	Alan Cash	Mark Feldberg	Miles & Melinda Harris	Rene Laserich	Sandra Nielsen	Leah Seaman	Megan Semjanovs	Rita Wray
Aven Helicopters	Mark Caswell	Geoff Ferrey	Robert Hawkins	Law Society of the Northwest Territories	Andrea Nilson	Megan Semjanovs	Wilson Shea	Mary Broussard & Thomas Wunderlin
Gerald Avery	Brian Chambers	Yvonne Fleming	Patricia A. Hayes	Marie LeDoze	Hendrika Nind	Ryan Sheppard	Ryan Sheppard	Cordi Yaceyko
Maxine Avery	Fred & Sue Chambers	Paul Fleury	Audrey Henderson	Alexander Legaree	Northern Specialties	Akash Sidhu	Akash Sidhu	Mike Yakabuski
AWG Northern Industries Inc.	Elizabeth Chapman	Doris & Maurice Forget	Kimberly Henderson	Ian Legaree & Shawna Lampi-Legaree	Kazmer & Bernice Nowak	Harjot Sidhu	Rupeinder Sidhu	Emilio Yee
Donna & Michael Axtell	Robert Charpentier	Foster Family Coalition NWT	Mike Hilchey	Roger Lelievre	Nuna Logistics Limited	John Simpson	John Simpson	Yellowknife All Ranks Mess Hall
Jeromy & Lina Ball	Bishop Murray Chatlain	Joel & Sheila Fournier	George Hill	Yolande Lelievre	Nunasi Corporation	Garry & Lesley Singer	Garry & Lesley Singer	Yellowknife Education District No. 1
Bob Balsillie	Stephen Clark	Darren Fraser	Garrett Hinchey	Francis Lincourt	NWT Literacy Council	Neil Slade	Neil Slade	Yellowknife Oldtimers Hockey Association
Bannon & Peyton Family	John Cliffe	Ruth B. Freimanis	Lynn Hjartarson	Greg Littlefair	Bonnie O'Connor	Pam Slater & Larry Adamson	Pam Slater & Larry Adamson	Yellowknife Ski Club
Rick Bargery	Ruby Collins	Mike & Sheena Gagnon	Don VanVliet & Kevin Hodgins	Bruce Look	Carey Ogilvie	Anne Smellie	Anne Smellie	YK Gold Dusters Hockey Club
Jaya Bastedo	Con Employees' Benevolent Society	Cheryl Grant Gamble	T. Edward Hoeve	Ronna MacCara	Patrice & Stephen O'Hara	Brandy Smith	Brandy Smith	Muriel Young
Walter & Anne Bathe	Catherine Connelly	Andrew Gamble & Gabriela Sparling	Geno Holick	Ben MacDonald	Mitsuko Oishi & Clay Tippet	Chloe Smith	Chloe Smith	Brian Yurris
Donna Allen & Bernie Bauhaus	Harold Cook	Richard Hunt	Judy & George Hunnisett	Ian MacDougall	Yellowknife Old Blasters	Dale Smith	Dale Smith	Linda Yonge & Richard Zieba
Normand "Tim" Beland	Lani Cooke	Andrew Hunter	Richard Hunt	Catherine MacKenzie	Edward & Frances Oldham	Sadie Smith	Sadie Smith	Michael & Colleen Zorn
Kathy Bentley	Donald M. Cooper Estate	Dan & Tara Hunter	Andrew Hunter	Julie MacKenzie	Jack & Jan op der Heijde	Pierrette Solman	Pierrette Solman	
Mike Bethell	Gordon & Shirley Cooper	Frances Hunter	Dan & Tara Hunter	Joanne MacKinnon	Marilyn Paradis	Howard E. Sparkes	Howard E. Sparkes	
BHP Billiton	Don Couturier	Sean Ivens	Frances Hunter	Laura MacNeill	John & Helen Parker	Howard M. Sparkes	Howard M. Sparkes	
Gary Bilodeau	Marie Couturier	J&R Mechanical Ltd.	Sean Ivens	Bonny Madsen	Jonathan Paul	Randy & Marylou Speelman	Randy & Marylou Speelman	
Gary Bilodeau	Marie Couturier	David & Terrilyn Janes	J&R Mechanical Ltd.	Erik Madsen	Michelle Penner	John Stephenson	John Stephenson	
Carl Bird	Louis Covello	Kelly Janes	David & Terrilyn Janes	Wally Maduke	Adam Pick			
Wendy Bisaro	Judi Cozzetto	Norma & David Jarvis	Kelly Janes	Kathleen Mahler	Howard Pierce			
Black Knight Pub	Devon & Crystal Craig	Gabriele Jason	Norma & David Jarvis	Rebecca Mahler	Elaine (Gay) Power			
Katherine Blackwell	Theresa Crane	Murray & Margaret Jelley	Gabriele Jason	Janet & Kirby Marshall	Quality Furniture			
Ric Bolivar	Al & Faith Cronk	Bodil Jelhof Jensen	Murray & Margaret Jelley	Norm McBride	R.T. Millwright Services			
Myranda Bolstad	Mark & Carolyn Cronk	Dave & Sara Johnson	Bodil Jelhof Jensen		Frances Ramsden			
Nicole Bonnell	Troy Curtis		Dave & Sara Johnson		Mildren & William Ramsden			
Ilse Borges	Dan Daniels							

Calendar produced with the generous support and assistance of



RTL - Robinson Enterprises Ltd.

**signed.**



**VERY, COOPER & Co.**

Certified General Accountants

Donations to the Yellowknife Community Foundation are always welcome. You may choose to donate by cash, cheque or online through our website, via **CanadaHelps.org**

Photo by Maik Tondeur-Zetzmann

# 2011 ANNUAL REPORT

## PRESIDENT'S MESSAGE



We have had an active year with the addition of four new funds bringing our total number of funds to 22. As well our annual Forever in our Hearts Valentine's gala continues to be a very successful fundraising activity with the tickets a much sought after commodity.

This is the fourth year we have prepared our annual report in a calendar format. This allows us to highlight various funds with current and prior year recipients as well as present our report in a more graphic manner. All of this is highlighted by the remarkable photographs of Yellowknife submitted by local photographers.

The Yellowknife Community Foundation's purpose can be simply described as **Ensuring Generosity Forever**. Our mission is to enhance the quality of life of the citizens of Yellowknife and the North with funding opportunities to address their needs.

We now have over \$3.1 million invested and distributed more than \$82,000 to groups and individuals in 2011. These funds are wide-ranging and would require considerable space to describe, they can however be described as focusing on:

- seniors | arts, culture and heritage
- sport and recreational activities | search and rescue
- children and youth | health and safety
- community services

In 2011 we welcomed four new funds:

- **Con Mine Employees Benevolent Fund** established to assist individuals pursuing a trade or professional career in the mining industry or an industry related to mining.
- **John Tumchewics Memorial Fund** established to assist individuals with helicopter flight training, helicopter maintenance or other training in the aviation field.
- **Randy McBride Hockey Project Fund** established to assist hockey players moving to pursue higher level of hockey while attending school
- **Foster Family Scholarship Fund** established to assist residents of the Northwest Territories who have grown up in foster care to further their education.

The success of the Yellowknife Community Foundation can be attributed to our community as a whole. It is you that

provides the financial and personal support that has made the Foundation what it is today. Specifically I would like to thank:

**Fund Sponsors** – those families and individuals that experienced the personal loss of a loved one, and used that as an opportunity to initiate a fund to offer assistance to others

**Contributors to those funds** – financial assistance has enabled those funds to grow, ensuring continued granting

**Our volunteers** – The spirit of generosity is evident in the passion and dedication of our volunteers, ranging from flipping burgers at a summer fundraiser, to planning the annual gala, or maintaining our website, and provided much welcomed graphics and communication support. These behind-the-scenes volunteers give their time and expertise without hesitation.

**Like-minded businesses** that offer their professional expertise and financial assistance:

- Avery, Cooper & Co. and Gerry Avery and Theresa Slator in particular, who have provided a "home" for the Foundation, offering office and meeting space for the Board, and employees' time to contribute to the administrative requirements of the Foundation.
- MacKay LLP and John Laratta in particular, who prepare our year end audit.
- Diavik Diamond Mines Ltd., a key sponsor of our annual gala
- First Air, a key sponsor of our annual gala
- Explorer Hotel, a key sponsor of our annual gala
- RTL Robinson Enterprises Ltd., who sponsor the printing and transportation costs for this calendar.
- Janet Pacey and Signed, who provides graphic design services for this calendar and many other Foundation projects.

On behalf of the Board of Directors, Executive Director and our volunteers, we thank all of you for your support.

ENSURING GENEROSITY FOREVER

Darrell Vikse  
President 2011



YCF Board on a planning retreat, 2012.

## BOARD OF DIRECTORS 2011

- Darrell Vikse | President
- Charles Dent | Vice President
- Stephen Clark | Treasurer
- Ian Legaree | Secretary
- Daryl Dolynny | Board Member
- Carol Van Tighem | Board Member
- David Gilday | Board Member
- Rob Long | Board Member
- Robert O'Rourke | Board Member
- Deb Simpson | Board Member
- Mike Vaydik | Board Member
- Theresa Slator | Volunteer
- Rosella Stoesz | Executive Director

The Yellowknife Community Foundation is enabled by Canada Revenue Agency to receive contributions, make investments and distribute funds to individuals and groups. It is important to note that the funding we distribute is from the interest of those investments. Not one dollar of the investment is distributed, ensuring that the investments can continue to fund activities in perpetuity.

## THE CALENDAR / ANNUAL REPORT

We've been producing this calendar / annual report since 2008. We send out a call for photos every May with a deadline of July 15th. Everyone is invited to send in their best photos of Yellowknife and area and they receive \$100 per photo and copies of the finished calendar. This year the calendar contains photos from these Yellowknife photographers:

- Dave Brosha | Donna Dooley | Nigel Fearon
- Darren Jacquard | Kevin Klingbeil | Alexander Legaree
- Elizabeth Lucko | Maik Tondeur-Zetzmann
- Riley Veldhuizen | Linda Whitford | Stephanie Yuill

Cover photo by Maik Tondeur-Zetzmann  
[www.flickr.com/chrismafoto](http://www.flickr.com/chrismafoto)