

making our  
**community**  
a better place to  
**live**



YELLOWKNIFE  
COMMUNITY  
FOUNDATION

# President's message



## 2002 was a busy year for the Yellowknife Community Foundation.

With the continued commitment and generosity of the citizens of Yellowknife, community-minded businesses and many others with a connection to the City, a milestone was reached in 2002 when the capital fund surpassed \$250,000. Low interest rates and uncertainty in world

markets seriously curtailed the activities of many Foundations across Canada in 2002. However, with its conservative investment strategy, the Yellowknife Community Foundation was still able to award grants and scholarships to five groups and individuals. It is also well positioned to continue to support many worthwhile projects and activities in the City of Yellowknife in 2003 and beyond.

While the Yellowknife Community Fund remains the primary fund of the Foundation, three new memorial funds were also established in 2002: the Chris Argue Memorial Fund, the Loraine Minish-Cooper Memorial Fund and the Lilly Borges Oldham Secondary-Language Scholarship Fund. These funds were established in memory of three well-known Yellowknifers who touched the lives of many in our community, each in their own special way. Loraine was well known to the directors of the Foundation, having served as a director herself until illness forced her to resign. Her enthusiasm and hard work will be long remembered and appreciated.

---

The Foundation also began a project to revitalize its advertising and information materials in 2002 with the very generous support and assistance of MediaWorks/Genesis Group. This includes the design of a web site launched in early 2003, the design and printing of new brochures and the redesign of the Foundation's display booth which is used at trade shows and set up at various locations around the City. The aim of the revitalization project is to increase public awareness of the Foundation, not only for the purpose of gathering donations but to make people aware of the grants that are available through the Foundation.

On behalf of the Board of Directors, I would like to thank all those who have contributed to the Foundation and its vision over the past year. I would also like to thank Theresa Slator, Linda Ireland and everyone at Avery, Cooper & Co. for their unflagging support and assistance. With your continued support, the Foundation will enhance the life of our city for many years to come.

Tom Hall,  
*President,*  
*Yellowknife Community Foundation*

## HIGHLIGHTS from the year

"...a milestone was reached in 2002 when the capital fund surpassed \$250,000."

"...Yellowknife Community Foundation was able to award grants and scholarships to five groups and individuals."

"...three new memorial funds were also established in 2002: the Chris Argue Memorial Fund, the Loraine Minish-Cooper Memorial Fund and the Lilly Borges Oldham Secondary-Language Scholarship Fund."

# The Foundation supports your community through grants

Individuals and organizations can apply to the Foundation for grants for projects of benefit to the citizens of Yellowknife. The Foundation awards grants in support of projects which:

- \* advance the welfare of the needy and alleviate human suffering and poverty,
- \* assist and promote arts and cultural activities,
- \* promote education,
- \* assist sport, recreation and community development,
- \* assist and advance the provision of medical services, and
- \* assist and advance other community activities or facilities of a charitable nature.

Organizations seeking grants are requested to obtain a copy of the Foundations “Grant Guidelines”. Please write or call or refer to the “Grant Seekers” page on our website [www.yellowknifecommunityfoundation.ca](http://www.yellowknifecommunityfoundation.ca).

Individuals applying for an award from one of our governed memorial funds should demonstrate the compatibility of their pursuit to the goal of the Fund.

Requests should be made in writing and addressed to us at:

The Yellowknife Community Foundation  
P.O. Box 1620  
4918 - 50th Street  
Yellowknife, NT X1A 2P2

All applications are reviewed and considered by the Board of Directors. We request that grant seekers make their application well in advance of their need for funding.

# Working for the Community

The Yellowknife Community Foundation has funded the following individuals and worthwhile community projects since its inception, helping to enhance the quality of life of the citizens of Yellowknife.

Side Door Youth Drop-In Centre  
 NWT Special Olympics  
 Ed Baker Seniors Recreation Centre  
 Yellowknife Ski Club  
 Yellowknife Polar Bear Swim Club  
 Youth Volunteer Corps  
 The Yellowknife Seniors Society  
 Yellowknife Badminton Club  
 Yellowknife Concerned Parents  
 Yellowknife Women's Centre  
 Canadian Mental Health Association (NWT Help Line)  
 Canadian National Institute for the Blind  
 Canadian Youth Against Impaired Driving (SADD)  
 St. Pat's High School - Bridges Program  
 Doug Richard (Fine & Performing Arts Fund 2000)  
 Rene Bonnett (Fine & Performing Arts Fund 2000)  
 Alexander Legaree (Jenny Gamble-Fournier Fund 2000)  
 Yellowknife Foster Family Association  
 United Way North (Yellowknife)  
 Stanton Regional Hospital - Tapestry Program (2001 and 2002)  
 NWT Council for Disabled Persons  
 Sacha Engelhardt (Fine & Performing Arts Fund 2001)  
 Rebecca Alty (Jenny Gamble-Fournier Fund 2001)  
 Lindsey Bolivar (Mary Beth Miller Fund 2001 and 2002)  
 Rotary Club of Yellowknife (Upkeep of the Back Bay Cemetery)  
 Sarah Joy Kallos (Fine & Performing Arts Fund 2002)  
 Amanda Dei (Fine & Performing Arts Fund 2002)  
 April Parchoma (Fine & Performing Arts Fund 2002)  
 Bryan Lacey (Jenny Gamble-Fournier Fund 2002)  
 Sandra Lockhart (Helen Kelly Gibson Award 2003)

## Help support your community through donations

Donations to the Yellowknife Community Foundation are permanently invested in income earning accounts. This ensures that your donation continues to provide benefits for years to come.

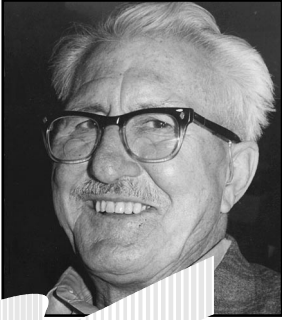
Donations can be made through:

- \* a one-time gift pledge
- \* a pledge of support over a period of years
- \* a dedicated life insurance policy
- \* a bequest in your Will
- \* the transfer of an existing fund
- \* the offering of real estate or other assets

Contributions can be made to the Yellowknife Community Fund or in a separate fund in your name or the name of someone you wish to be remembered. Donations generally qualify as deductions for income tax purposes.

For information on how to contribute to the Yellowknife Community Foundation call, write or visit our website at [www.yellowknifecommunityfoundation.ca](http://www.yellowknifecommunityfoundation.ca).

# Generosity at work



## Ed Baker

Ed Baker's name is quite familiar to many Yellowknife residents. He donated \$100,000 to launch the fund raising drive to build the Senior's Recreation Centre that now bears his name.

Ed Baker was also one of the first donors to the Yellowknife Community Foundation. His precious gift of \$10,000 will be protected and grow over the years and the income generated will be providing for the community forever.

Not only will Ed Baker be remembered because an important building bears his name, he will be remembered for contributing to many local needs through the Yellowknife Community Foundation.



## Barb Bromley

Barb Bromley has donated time, energy and compassion to numerous causes in Yellowknife since arriving as a young bride in 1948.

Although her many contributions to Yellowknife and its residents are too numerous to list, they include organizing the city's first baby clinics and immunization programs, assisting in the formation of the first Scout and Cub troop, pioneering the first annual Midnight Madness Festival and the first bedding plant sale.

Still an active volunteer for a number of charities in the city, Barb also makes an annual donation to the Foundation by paying premiums on a life insurance policy which names the Foundation as the beneficiary.

# Foundation funds

The Yellowknife Community Foundation administers several funds, profiled on the pages that follow.

- \* Yellowknife Community Fund, page 6
- \* Fine & Performing Arts Fund, page 8
- \* Jenny Gamble-Fournier Memorial Scholarship Fund, page 10
- \* Mary Beth Miller Memorial Fund, page 12
- \* Rogan Fund
- \* Chris Argue Memorial Fund, page 14
- \* Lilly Borges-Oldham Second-Language Scholarship Fund, page 16
- \* Loraine Minish-Cooper Memorial Fund, page 18

When Hope Charpentier turned 11, she decided to do something different for her birthday. Instead of receiving presents, she asked her friends to make a donation to the Yellowknife Community Foundation's Jenny Gamble-Fournier Memorial Fund. "We knew Jenny Gamble, and my mom and I thought it would be a nice way to remember her," says Hope. "It felt good giving the money to the Community Foundation."



# Yellowknife Community Fund

A gift to the Yellowknife Community Fund enables the Foundation to fulfill its mission: To enhance the quality of life of the citizens of Yellowknife. Founded in 1993 the Yellowknife Community Fund awards grants in the areas of social services, health, arts, education and the environment.

The Fund pools individual contributions so that collectively they can make a significant social impact. Some of the projects and agencies which have benefited from the Fund include; NWT Special Olympics, The Yellowknife Seniors Society, Canadian Mental Health Association (NWT Help Line), United Way North (Yellowknife).

A donor may make a contribution to the Fund in their own name, in the name of a loved one they wish to be remembered, in the name of another person to mark a special occasion or as a gift. The donor may direct the Foundation to issue the tax receipt to themselves or to the person in whose honor they are making the contribution.

The Foundation solicits and accepts grant applications from organizations, which meet certain guidelines. A Grants Committee evaluates applications and makes its recommendations to the Board of Directors. The Board awards grants annually within the parameters of the funds available and the mission of the Foundation.

*Donations to Yellowknife Community Fund are still accepted. Please contact the Yellowknife Community Foundation for information about making a donation or applying for a grant.*

## Helping to weave together “The Threads of a Life”



The Tapestry Program was a Yellowknife Community Fund grant recipient in 2002. The Program allows eight adults living with cancer to attend a five-day retreat at Trapper’s Lake Spirituality Center. Here the participants are offered a safe and nurturing environment in which they can share their experiences and deal with the prevalent issues of isolation, fear and hopelessness that accompany cancer. The Program includes a narrative support group, a creative arts program, meditation skills training, massage, education and discussions of issues relevant to death and dying. Positive outcomes for the participants include increased social connectedness, life-style changes incorporating stress reduction and hope for a future living with cancer.




# Fine and Performing Arts Fund

In 1999, “Kids Unlimited” established a permanent Fine and Performing Arts Fund with the Yellowknife Community Foundation. Earnings from the Fund will be used to support the development of NWT residents in the fine and performing arts. “Kids Unlimited” is a Yellowknife non-profit society that offered drama, art and other recreation programs for children and youth during the 1980s and early 1990s. Scholarships are available each year for those pursuing artistic excellence in drama, dance, music and theatre arts including technical production, studio arts, film or photography.

Donations from the Community Television Society and the Yellowknife City Band (disbanded) in 2000 added a significant contribution to the Fund.

*Donations to the Fine and Performing Arts Fund are still accepted. Please contact the Yellowknife Community Foundation for information about making a donation or applying for a grant.*



**SARAH JOY KALLOS**  
Fine and Performing Arts Fund  
2002 recipient.  
Sarah Joy used the scholarship  
to assist with her last year at  
the University of  
Saskatchewan’s College of  
Arts and Sciences.



# Jenny Gamble-Fournier Memorial Scholarship Fund



Jenny Gamble-Fournier was a little girl when her family moved to Yellowknife in 1978. After graduating high school, she spent a year in Europe and then went on to complete Carleton University's journalism program although her real passion was for art history. She worked in Yellowknife briefly before returning to Europe to be with her husband-to-be, Chris Fournier. Jenny and Chris were married less than two months before she succumbed to bone cancer in late 1999.

A talented painter and poet and a passionate spirit, Jenny was very proud of her "northern" roots. In her memory, friends and family have established a permanent scholarship fund for students pursuing a post-secondary education, with an emphasis on the arts. The fund will provide annual scholarships to students of Yellowknife's Sir John Franklin High School with high levels of academic achievement, well-rounded character and wide interests.

*Donations to the Jenny Gamble-Fournier Memorial Scholarship Fund are still accepted. Please contact the Yellowknife Community Foundation for information about making a donation or applying for a grant.*



## BRYAN LACEY

Jenny Gamble-Fournier Memorial Scholarship 2002 recipient.

Bryan used the scholarship to assist with his first year at the University of Regina's Faculty of Fine Arts.



# Mary Beth Miller Memorial Fund

Mary Beth Miller was born August 24, 1976, in Kitchener, Ontario and moved to Yellowknife with her family when she was six years old.

Always an athlete, Mary Beth was involved in many sports and activities throughout her youth. Her parents supported her pursuits wholeheartedly and provided whatever assistance they could to the sporting clubs sponsoring the activities in which Mary Beth was participating.

Mary Beth was an enthusiastic and spirited participant. She constantly challenged herself and her teammates to strive to achieve their best although it was more important to Mary Beth that people took pleasure in the experience. As important as it may be to set and achieve a goal, Mary Beth believed the journey to the goal must itself be enjoyable.

Mary Beth died July 2, 2000, as a result of a bear attack while training at the Miriam Bedard Biathlon Centre in Val Cartier, Quebec.

Mary Beth's family established the Mary Beth Miller Memorial Fund to support athletes who demonstrate the qualities that Mary Beth exhibited in her approach to life.

*Donations to the Mary Beth Miller Memorial Fund are still accepted. Please contact the Yellowknife Community Foundation for information about making a donation or applying for a grant.*



## LINDSEY BOLIVAR

Mary Beth Miller Memorial Fund  
2002 recipient.

Lindsey used the grant to support her training with the National Biathlon Team.

# Chris Argue Memorial Fund



Chris was born in Churchill, Manitoba, in 1976 and was a proud resident of Yellowknife from the age of four onward. Growing up in Yellowknife included wonderful times with friends, families and cabin life at Prelude Lake. Chris was active in student government at Sir John Franklin High School and was instrumental in starting Dry Grad.

At the time of his accidental death at the age of 25, he was studying engineering at the University of Alberta.

Chris had a passion for life and a deep love of the wilderness, and completed many trips mountaineering, canoeing, hiking, winter camping and back-country skiing in the north and in the Rockies. He was also an avid mountain biker. Fearless but thorough in tackling new challenges, he brought leadership, intelligence, ingenuity and concern for others to everything he did.

Chris's family has chosen to honour his memory by establishing a fund to promote the development of leadership skills and self-confidence in self-propelled wilderness travel in the Northwest Territories.

*Donations to the Chris Argue Memorial Fund are still accepted. Please contact the Yellowknife Community Foundation for information about making a donation or applying for a grant.*



# Lilly Borges Oldham Second Language Scholarship Fund

Born to German immigrant parents, Lilly knew first hand the importance of a second, and third, language. Her passion for life, languages and learning were clearly evident in her world travels with her husband, Stuart, and in her exceptional contributions to education in the Northwest Territories.

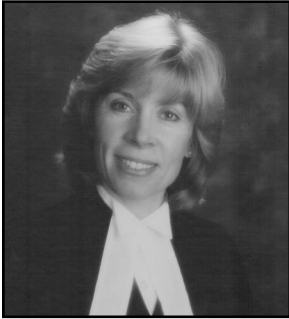
Lilly inspired a generation of young people in Yellowknife over the past twenty years, infusing them with her thirst for lifelong learning and her passion for languages and cultures. A long-term employee of Yellowknife Education District No. 1, Lilly was dedicated to her students, colleagues and profession in both administrative and teaching posts. She was instrumental in the development of French immersion programs in Yellowknife and served as the territorial representative of the Canadian Association of Second Language Teachers for five years.

Lilly died two days before her 49th birthday after a courageous battle with cancer. She will be remembered for the enthusiasm and energy she brought to her work, the courage and strength she showed in difficult times and her straightforward “no nonsense” approach to life.

To help continue Lilly’s passion for bilingualism and multiculturalism, a memorial scholarship fund has been established to assist students entering post-secondary studies in languages and/or cultures.

*Donations to the Lilly Borges Oldham Second-Language Scholarship Fund are still accepted. Please contact the Yellowknife Community Foundation for information about making a donation or applying for a grant.*

# Lorraine Minish-Cooper Memorial Fund



Lorraine Minish-Cooper came to Yellowknife in 1979 as an Articling Student-at-Law and stayed to marry, raise a family and practice law until breast cancer took her life in 2002 after a long and valiant struggle.

Lorraine enjoyed a distinguished legal career with the Federal Crown Attorney's office in Yellowknife where she was ultimately promoted to Regional Director for the Northwest Territories in 1998. She also served as a Director of the NWT Law Society and was its President in 1992.

Lorraine was an enthusiastic supporter of her three daughters' involvement in speed skating and was also a Director, and President of the Yellowknife Speedskating Association. Lorraine personally found great joy through her long involvement with the Yellowknife Choral Society and was integral to her daughter's musical training when Megan's talent became apparent. The Yellowknife Community Foundation also enjoyed the benefits of her many talents when she was a Director, and Treasurer, in 2001/2002.

It is Lorraine's complete devotion to her family and her insatiable passion for gardening that will be especially remembered by all who knew and loved her. It was Lorraine's wish that a Garden of Hope planted in her memory would be a place of peace and comfort, especially for those with breast cancer and their families. The Garden of Hope was planted in spring of 2003 at a site selected by Lorraine and will be maintained in perpetuity.

*Donations to the Lorraine Minish-Cooper Memorial Fund are still accepted. Please contact the Yellowknife Community Foundation for information about making a donation.*



## THE LORRAINE MINISH-COOPER GARDEN OF HOPE

Some of the many citizens of Yellowknife who contributed to the planting of The Garden are pictured here from left to right:

Johnny Graves, Kathryn Roy, Erin Freeland Ballantyne, Linda Dunbar, Penny Ballantyne, Debbi Ross, Anne Marie Dawe, Ann Burry, Penny Johnson, Terry Foster.

people working  
together  
can make a  
difference



YELLOWKNIFE  
COMMUNITY  
FOUNDATION

Annual Report 2002

Yellowknife Ski Club

The Yellowknife Community Foundation, Yellowknife, NT

## **FINANCIAL STATEMENTS**

For the Year Ended December 31, 2002

## **AUDITORS' REPORT**

### *To the Members of the Board of the Yellowknife Community Foundation:*

We have audited the Balance Sheet of the Yellowknife Community Foundation as at December 31, 2002 and the Statements of Fund Balances, and Revenue and Expenditure for the year then ended. These financial statements are the responsibility of the Board. Our responsibility is to express an opinion on these financial statements based on our audit.

We conducted our audit in accordance with Canadian generally accepted auditing standards. Those standards require that we plan and perform an audit to obtain reasonable assurance whether the financial statements are free of material misstatement. An audit includes examining, on a test basis, evidence supporting the amounts and disclosures in the financial statements. An audit also includes assessing the accounting principles used and significant estimates made by the Board, as well as evaluating the overall financial statement presentation.

In our opinion, these financial statements present fairly, in all material respects, the financial position of the Foundation as at December 31, 2002 and the results of its operations for the year then ended in accordance with Canadian generally accepted accounting principles. As required by the Canada Corporations Act, we report that, in our opinion, these principles have been applied on a basis consistent with that of the preceding period.



MacKay LLP

Chartered Accountants

March 28, 2003

Yellowknife, Northwest Territories



The Yellowknife Community Foundation, Yellowknife, NT

**Statement I****BALANCE SHEET**

December 31, 2002

	<b>2002</b>	2001
<b>ASSETS</b>		
<b>CURRENT</b>		
Bank	\$ 34,322	\$ 15,709
Securities (Note 3)	<u>242,823</u>	<u>201,699</u>
	<u>\$ 277,145</u>	<u>\$ 217,408</u>
 CAPITAL ASSETS (Notes 2 and 4)	 <u>669</u>	 <u>837</u>
	<u>\$ 277,814</u>	<u>\$ 218,245</u>
 <b>LIABILITIES</b>		
<b>CURRENT</b>		
Payables and Accruals	\$ 837	\$ -
Funds Held in Trust (Note 8)	<u>12,000</u>	<u>-</u>
	\$ 12,837	\$ -
 <b>FOUNDATION'S FUND BALANCES</b>		
<b>CAPITAL FUNDS</b> per Statement II	266,386	209,770
<b>GENERAL FUND</b> per Statement II	<u>(1,409)</u>	<u>8,475</u>
	<u>264,977</u>	<u>218,245</u>
	<u>\$ 277,814</u>	<u>\$ 218,245</u>

The Yellowknife Community Foundation, Yellowknife, NT

**Statement II**

**STATEMENT OF FUND BALANCES**

For the Year Ended December 31, 2002

	<b>2002</b>	2001
<b>CAPITAL FUNDS (Note 5)</b>		
Opening Balance	\$ 209,770	\$ 196,325
Donations - Unrestricted Fund	7,100	7,200
Donations - Donor Advised Funds	<u>49,516</u>	<u>6,245</u>
Closing Balance	<u>\$ 266,386</u>	<u>\$ 209,770</u>
 <b>GENERAL FUND</b>		
Opening Balance	\$ 8,475	\$ 9,579
(Deficit) of Revenue over Expenditure per Statement III	<u>(9,884)</u>	<u>(1,104)</u>
Closing Balance	<u>\$ (1,409)</u>	<u>\$ 8,475</u>

The Yellowknife Community Foundation, Yellowknife, NT

**Statement III****STATEMENT OF REVENUE AND EXPENDITURE**

For the Year Ended December 31, 2002

	<b>2002</b>	2001
<b>REVENUE</b>		
Interest and Investments	\$ 3,153	\$ 6,704
Donations - Operations	1,908	2,858
Donated Services	<u>16,674</u>	<u>8,213</u>
	<u>21,735</u>	<u>17,775</u>
<b>EXPENDITURE</b>		
Advertising	321	1,617
Amortization	167	209
Bank Charges	46	39
Donations	3,300	5,000
Life Insurance Premiums	1,608	1,608
Office	18,767	8,328
Professional Fees	1,898	1,978
Subscriptions and Memberships	<u>234</u>	<u>100</u>
	<u>26,341</u>	<u>18,879</u>
<b>SUBTOTAL</b>	<u>\$ (4,606)</u>	<u>\$ (1,104)</u>
LOSS ON SECURITIES – IMPAIRMENT ON VALUE	( 5,278)	-
<b>(DEFICIT) OF REVENUE OVER EXPENDITURE</b>	<u>\$ (9,884)</u>	<u>\$ (1,104)</u>

The Yellowknife Community Foundation, Yellowknife, NT

**Note I**

**NOTES TO THE FINANCIAL STATEMENTS  
For the Year Ended December 31, 2002**

**NATURE OF FOUNDATION**

The Yellowknife Community Foundation is a non-profit organization incorporated on June 1, 1993 under Part II of the Canada Corporations Act. The Foundation is a pooling of charitable gifts in capital funds, the earnings from which are used to meet a wide range of local needs and interests - the arts and other cultural activities, scholarships, medical and scientific research, environmental concerns and social problems. In some circumstances, the earnings may be allocated to a charitable cause or organization as directed by the donor. The Foundation is a registered charity and is classified as a public foundation for purposes of the Income Tax Act (Canada).

**Note II**

**SIGNIFICANT ACCOUNTING POLICIES**

- a) Bequests, Endowments and Donations are recorded as received. The Foundation follows the restricted fund method of accounting for contributions.
- b) The Foundation receives materials and services at no cost from various sources. Commencing 1997, donations of these items are recorded in the accounts, where the determination of value can be reasonably determined. If the fair market value is not easily determined, then the transactions are not recorded.
- c) Investments are recorded at cost, and are written down to reflect any declines in market value which are other than temporary.
- d) Capital Assets are recorded at cost and amortization is claimed on the diminishing balance method at the following rates:

Furniture and Fixtures      20%

One-half (1/2) of the normal rate of amortization is recorded in the year of acquisition.

The Yellowknife Community Foundation, Yellowknife, NT

### Note III

#### SECURITIES

	Cost	Market
RBC Dominion Securities	<u>\$ 242,823</u>	<u>\$ 242,823</u>

Securities are subject to market fluctuations.

Securities cost of \$248,101 were written down to market value at December 31, 2002, to reflect an impairment of value recognized subsequent to year end.

### Note IV

#### CAPITAL ASSETS

	Cost	Accumulated Amortization	Net Book 2002	Value 2001
Furniture and Fixtures	<u>\$ 1,162</u>	<u>\$ 493</u>	<u>\$ 669</u>	<u>\$ 837</u>

### Note V

#### CAPITAL FUNDS

The Board of Directors of the Foundation have established the following capital funds and fund guidelines.

Restricted Fund - established for accumulating capital donations for which the donor has restricted the use of the income for specified purposes.

Unrestricted Fund - established for accumulating capital donations for which the income generated has not been restricted by the donor.

Donor Advised Fund - annual grants are made in consultation with the donor.

Administration Endowment Fund - established for accumulating capital donations for which the income has been designated to fund the operating costs of the Foundation.

Fine and Performing Arts Fund - established for accumulating capital donations for which the income has been designated to support the development of NWT residents in the fine and performing arts.

The Yellowknife Community Foundation, Yellowknife, NT

**Note V**

**CAPITAL FUNDS (continued)**

Jenny Gamble-Fournier Memorial Scholarship Fund - established for accumulating capital donations for which the income has been designated to provide annual scholarships to students with high levels of academic achievement, well-rounded character and wide interests.

Mary Beth Miller Memorial Fund - established for accumulating capital donations for which the income has been designated to provide grants to athletes and sporting organizations that promote the qualities that Mary Beth exhibited.

Rogan Fund - established for accumulating capital donations for which the income has been designated to provide scholarships and grants.

Chris Argue Memorial Fund - established for accumulating capital donations for which the income has been designated to provide funds to individuals or organizations to promote leadership, participation, skill development and self - confidence in self-propelled wilderness travel in the Northwest Territories. Self-propelled wilderness travel means non-motorized modes of travel such as hiking, snow-shoeing, skiing, canoeing and mountain-biking.

Loraine Minish-Cooper Memorial Fund - established for accumulating capital donations for which the income has been designated for the ongoing maintenance of Loraine’s Garden of Hope.

Lilly Borges Oldham Second-Language Scholarship Fund - established for accumulating capital donations for which the income has been designated for annual scholarships to post-secondary students of a second language or culture.

	Balance Beginning	Addition	Balance Ending
Unrestricted	\$ 91,516	\$ 7,100	\$ 98,616
Administration Endowment	41,688	-	41,688
Fine and Performing Arts	41,926	500	42,426
Jenny Gamble-Fournier	11,822	1,411	13,233
Mary Beth Miller	17,818	600	18,418
Rogan	5,000	-	5,000
Chris Argue	-	13,051	13,051
Loraine Minish-Cooper	-	20,994	20,994
Lilly Borges Oldham	-	12,960	12,960
	<u>\$209,770</u>	<u>\$ 56,616</u>	<u>\$266,386</u>

---

The Yellowknife Community Foundation, Yellowknife, NT

**Note VI****LIFE INSURANCE**

The foundation has been designated as the beneficiary of life insurance policies. Premiums paid by the insured are recorded as revenue, then recorded as expenditures. As at December 31, 2002 the amount of insurance in force for which the Foundation has been designated as beneficiary totals \$34,350.

**Note VII****STATEMENT OF CASH FLOWS**

A statement of cash flows has not been prepared as it would not provide additional meaningful information.

**Note VIII****FUNDS HELD IN TRUST**

The Foundation is holding funds in trust pending direction on their disposition.

## **The 2003/2004 Board of Directors**

The Foundation is managed by a volunteer Board of Directors:

Gerry Avery, Treasurer  
1993 - 2001, 2002 - Present

Phone: (867) 873-3441  
Fax: (867) 873-2353  
E-mail: [avery@averyco.nt.ca](mailto:avery@averyco.nt.ca)

Jeannie Rocher, Board Member  
2003 - present

Phone: (867) 873-2004 (w)  
Fax: (867) 873-9376

George Gibson, Board Member  
2002 - Present

Phone: (867) 873-4954  
Fax: (867) 920-4651  
E-mail: [raveng@theedge.ca](mailto:raveng@theedge.ca)

Bernadette Stewart, Board Member  
2003 - present

Phone: (867) 873-8666  
Fax: (867) 873-8285  
E-mail: [bstewart@bbex.com](mailto:bstewart@bbex.com)

Tom Hall, President  
2001 - Present

Phone: (867) 873-4141  
Fax: (867) 873-0243  
E-mail: [twhall@theedge.ca](mailto:twhall@theedge.ca)

Leanne Tait, Board Member  
2003 - present

Phone: (867) 669-6211  
Fax: (867) 669-7058  
E-mail: [leanne@taitcc.com](mailto:leanne@taitcc.com)

David Hamilton, Vice-President  
2002 - Present

Phone: (867) 873-5771  
Fax: (867) 873-0432  
E-mail: [dhamilton@theedge.ca](mailto:dhamilton@theedge.ca)

Don Yamkowy, Board Member  
2002 - present

Phone: (867) 873-2121  
Fax: (867) 873-8482  
E-mail: [don@keywesttravel.ca](mailto:don@keywesttravel.ca)

Ian Legaree, Secretary  
1996 - 2001, 2003 - Present

Phone: (867) 920-4290  
Fax: (867) 920-6467  
E-mail: [legaree.clan@nt.sympatico.ca](mailto:legaree.clan@nt.sympatico.ca)



## Former Directors

Today's success would not have been possible without the contributions made by former Directors of the Board:

Barb Bromley	1994 - 1995
Annetta Kuntz	1994 - 1996
Kevin Montgomery	1993 - 1994
Janet Robinson	1993 - 1995
Bishop John Sperry	1993 - 1996
Dennis Crane	1993 - 1997
Ray Parker	1998
Geoff Wiest	1993 – 1999
Mike Ballantyne	1996 - 2001
Max Hall	1994 - 2001
Blair Dunbar	1996 - 2002
Julia Mott	1999 - 2002
Lorraine Minish-Cooper	2001 - 2002
Connie Landstrom	1996 - 2003
Louise Vertes	1996 - 2003
Doug Nelson	2000 - 2003

and by Peg Melanson, volunteer Executive Director of the Yellowknife Community Foundation from 1993 - 1994.

The Board of Directors would also like to acknowledge **Blair Dunbar, Alistair Gamble, Linda Ireland, Theresa Slator** and Community Foundations of Canada for their assistance and encouragement in the development of the Yellowknife Community Foundation.

## **Nominating Committee**

The Yellowknife Foundation Board is selected according to its bylaws by a nominating committee consisting of:

- the Mayor of the City of Yellowknife,
- the President of the Yellowknife Chamber of Commerce,
- the President of the Yellowknife Ministerial Association, and
- the Commanding Officer of the Royal Canadian Mounted Police, “G” Division.

The 2003/2004 Board of Directors was selected by the Nominating Committee whose current members are:

- Mayor Gordon Van Tighem
- David McPherson (2002/2003 President, Chamber of Commerce),
- Alan Hoeft, representing the 2002/2003 President of the Yellowknife Ministerial Association, and
- Everett Summerfield, Chief Superintendent, R.C.M.P., “G” Division

## **Founding Corporate Supporters**

We would like to formally acknowledge a number of community-minded businesses in Yellowknife whose generous corporate support made the establishment of the Yellowknife Community Foundation possible:

Artisan Press Limited

Avery, Cooper & Co.

Canarctic Graphics

Gullberg, Wiest, MacPherson & Kay (now Lawson Lundell)

Inkit Limited

MacKay LLP

Northern News Services

RTL Robinson Enterprises Ltd.

## 2002 Corporate Supporters

The Yellowknife Community Foundation acknowledges the generous support of the following organizations who supported the Foundation in 2002.



Produced and designed by Tait Communications and Consulting  
Printed by Canarctic Graphics with the generous assistance of RTL Robinson Enterprises Ltd.

The Yellowknife Community Foundation  
P.O. Box 1620 4918 - 50th Street Yellowknife, NT X1A 2P2

[www.yellowknifecommunityfoundation.ca](http://www.yellowknifecommunityfoundation.ca)