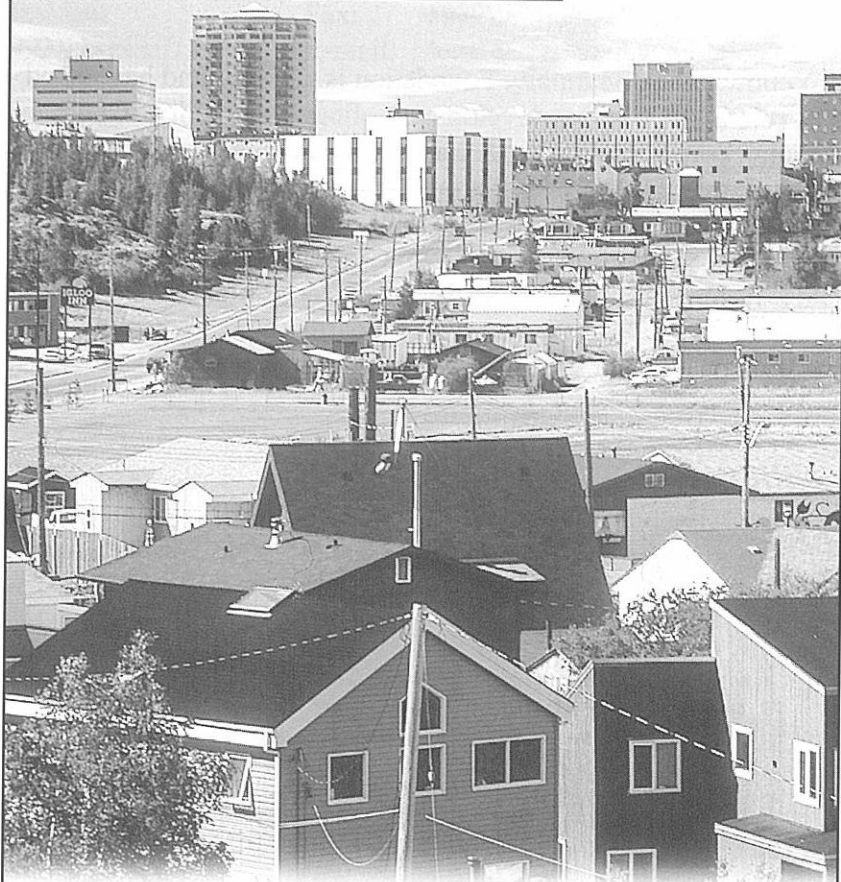




**YELLOWKNIFE
COMMUNITY
FOUNDATION**



2000

Photo by Terry Parker

ANNUAL REPORT

President's Message

The Yellowknife Community Foundation began operations in 1991 and was formally incorporated and registered as a charity in 1993. To date, over 200 individuals and organizations have contributed to a capital fund of nearly \$200,000 (December 31, 2000).

2000 was a year of significant growth and development for the Foundation. The *Mary Beth Miller Memorial Fund* was initiated and significant growth occurred in the *Fine & Performing Arts Fund* and the *Jenny Gamble-Fournier Memorial Scholarship Fund*. The Foundation also initiated a sponsor-supported advertising campaign and the Board was able to continue to approve a number of grants to worthy local programs and services.

The Yellowknife Community Foundation is growing and has staked out its role in the positive development of our community. Our continuing corporate sponsorship arrangement with Northern News Services Limited (NNSL) will allow the Foundation to provide more information to the public and build towards its goal of being a significant contributor to the community. In 2000, NNSL was joined by RTL Robinson Limited in sponsoring a series of ten ads to promote the Foundation and its programs. The Board wishes to thank both organizations for their continuing support of our goals.



Presentation to CYAID 2001 Conference

The 2001/2002 Board of Directors

The Foundation is managed by a volunteer Board of Directors:

Blair Dunbar Board Member 1996 - present	Phone: (867)873-5707 Fax: (867)873-8976 E-mail: dunbar@ssimicro.com
Connie Landstrom Board Member 1996 - present	Phone: (867)873-3809 Fax: (867)669-8881 E-mail: c_landstrom@learnnet.nt.ca
Ian Legaree President 1993 - present	Phone: (867)873-7245 Fax: (867)920-6467 E-mail: legaree.clan@nt.sympatico.ca
Julia Mott Vice President 1999 - present	Phone: (867)669-6601 Fax: (867)669-6603 E-mail: jmott@firststair.ca
Louise Vertes Board Member 1996 - present	Phone: (867)873-8953 Fax: (867)920-4538 E-mail: lvertes@ssimicro.com
Doug Nelson Board Member 2000 - present	Phone: (867)766-5201 Fax: (867)873-5488 E-mail: doug.j.nelson@royalbank.com
Lorraine Minish-Cooper Treasurer 2001 - present	Phone: (867)873-2909 Fax: (867)873-2380 E-mail: lorraine@theedge.ca
Tom Hall Board Member 2001 - present	Phone: (867)920-8986 Fax: (867)873-0243 E-mail: tom_hall@gov.nt.ca
Yvette Gonzales Secretary 2001 - present	Phone: (867)873-8359 Fax: (867)873-5801 E-mail: (867)yvette@nwtam.com

Yellowknife Community Foundation - Grant Guidelines

The Yellowknife Community Foundation awards grants in support of projects which:

- advance the welfare of the needy and alleviate human suffering and poverty,
- assist and promote arts and cultural activities,
- assist sport, recreation and community development,
- assist and advance the provision of medical services, and
- assist and advance other community activities or facilities of a charitable nature.

How the Yellowknife Community Foundation Works

Donations to the Yellowknife Community Foundation are placed in a permanent capital fund, with the generated income being allocated to meet timely objectives. The fund is protected from inflation by reinvesting a portion of the earnings. The Foundation is not dedicated to any specific charity; its role is to support the many and varied needs in Yellowknife.

Donations can be made through:

- an outright gift or pledge in a lump sum, or over a period of years
- a dedicated life insurance policy
- a bequest in your Will
- the transfer of an existing fund
- the offering of real estate or other acceptable properties

Contributions can be made to the general fund or in a separate fund in your name or the name of someone you wish to be remembered.

Donations may qualify for deductions for Income Tax purposes.

For information on how to contribute to the Yellowknife Community Foundation or for an application form for a grant, contact the Yellowknife Community Foundation at the address on the back cover of this report.

Our Donors

Since its inception, the Yellowknife Community Foundation has received capital fund donations from over 200 community-minded individuals and organizations.

General Fund

Memorial Donations Received in Memory of:

Dennis Crane

Mame Remnant

Chris George

Sisko Kaarina Emery

Elsie Makarenko

Donations Received to Honour the Birth of:

Shiri MacPherson-Casebeer

The Board of Directors would also like to acknowledge **Alistair Gamble, Theresa Slator and Community Foundations of Canada** for their assistance and encouragement in the development of the Yellowknife Community Foundation.

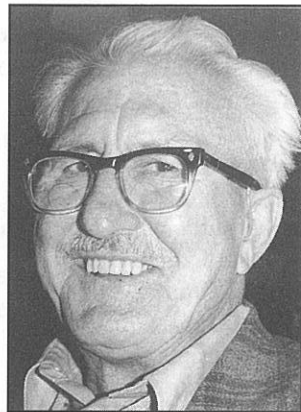
Hall of Fame Donors

Ed Baker

Ed Baker's name is quite familiar to many Yellowknife residents. He donated \$100,000 to launch the fund raising drive to build the Senior's Recreation Centre that now bears his name.

Ed Baker was also one of the first donors to the Yellowknife Community Foundation. His precious gift of \$10,000 will be protected and grow over the years and the income generated will be providing for the community forever.

Not only will Ed Baker be remembered because an important building bears his name, he will be remembered for contributing to many local needs through the Yellowknife Community Foundation.



Barb Bromley

Barb Bromley has donated time, energy and compassion to numerous causes in Yellowknife since arriving as a young bride in 1948.

Although her many contributions to Yellowknife and its residents are too numerous to list, they include organizing the city's first baby clinics and immunization programs, assisting in the formation of the first Scout and Cub troop, pioneering the first annual Midnight Madness Festival and the first bedding plant sale.

Still an active volunteer for a number of charities in the city, Barb also makes an annual donation to the Foundation by paying premiums on a life insurance policy which names the Foundation as the beneficiary.



Fine and Performing Arts Fund

In 1999, "Kids Unlimited" established a permanent *Fine and Performing Arts Fund* with the Yellowknife Community Foundation. Earnings from the Fund will be used to support the development of NWT residents in the fine and performing arts. "Kids Unlimited" is a Yellowknife non-profit society that offered drama, art and other recreation programs for children and youth during the 1980s and early 1990s. Scholarships are available each year for those pursuing artistic excellence in drama, dance, music and theatre arts including technical production, studio arts, film or photography.

Donations from the Community Television Society and the Yellowknife City Band (disbanded) in 2000 added a significant contribution to the Fund. Additional donations to the *Fine and Performing Arts Fund* are still accepted. Please contact the Yellowknife Community Foundation for information about donating or an application for scholarship.

Donors to the Fine and Performing Arts Fund

Community Television Society (Yellowknife)

Kids Unlimited (Disbanded)

Yellowknife Arts Council (Disbanded)

Yellowknife City Band (Disbanded)



Presentation to Rene Bonnett

Jenny Gamble-Fournier Memorial Scholarship Fund

Jenny Gamble-Fournier was a little girl when her family moved to Yellowknife in 1978. After graduating high school, she spent a year in Europe and then went on to complete Carleton University's journalism program although her real passion was for art history. She worked in Yellowknife briefly before returning to Europe to be with her husband-to-be, Chris Fournier. Jenny and Chris were married less than two months before she succumbed to bone cancer in late 1999.

A talented painter and poet and a passionate spirit, Jenny was very proud of her "northern" roots. In her memory, friends and family have established a permanent scholarship fund for students pursuing a post-secondary education, with an emphasis on the arts. The fund will provide annual scholarships to students of Yellowknife's Sir John Franklin High School with high levels of academic achievement, well-rounded character and wide interests.

Donations to the ***Jenny Gamble-Fournier Memorial Scholarship Fund*** are still accepted. Please contact the Yellowknife Community Foundation for information about donating or an application for scholarship.

Jenny Gamble-Fournier Memorial Scholarship Fund

The Jenny Gamble-Fournier Memorial Scholarship Fund has received donations from many friends and family across Canada since its inception in 1999:



Mary Beth Miller Memorial Fund

Mary Beth Miller was born August 24, 1976, in Kitchener, Ontario and moved to Yellowknife with her family when she was six years old.

Always an athlete, Mary Beth was involved in many sports and activities throughout her youth. Her parents supported her pursuits wholeheartedly and provided whatever assistance they could to the sporting clubs sponsoring the activities in which Mary Beth was participating.



Mary Beth was an enthusiastic and spirited participant. She constantly challenged herself and her teammates to strive to achieve their best although it was more important to Mary Beth that people took pleasure in the experience. As important as it may be to set and achieve a goal, Mary Beth believed the journey to the goal must itself be enjoyable.

Mary Beth died July 2, 2000, as a result of a bear attack while training at the Miriam Bedard Biathlon Centre in Val Cartier, Quebec.

Mary Beth's family established the Mary Beth Miller Memorial Fund to support athletes who demonstrate the qualities that Mary Beth exhibited in her approach to life.

Donations to the ***Mary Beth Miller Memorial Fund*** are still accepted. Please contact the Yellowknife Community Foundation for information about donating or an application for a grant.

Mary Beth Miller Memorial Fund

The Mary Beth Miller Memorial Fund has received donations from many friends and family across Canada since its inception in 2000:

THE YELLOWKNIFE
COMMUNITY FOUNDATION
YELLOWKNIFE, N.W.T.

FINANCIAL STATEMENTS
For the Year Ended December 31, 2000
AUDITORS' REPORT

To the Members of the Board of the Yellowknife Community Foundation:

We have audited the Balance Sheet of the Yellowknife Community Foundation as at December 31, 2000 and the Statements of Capital Funds and Surplus, and Revenue and Expenditure for the year then ended. These financial statements are the responsibility of the Board. Our responsibility is to express an opinion on these financial statements based on our audit.

We conducted our audit in accordance with generally accepted auditing standards. Those standards require that we plan and perform an audit to obtain reasonable assurance whether the financial statements are free of material misstatement. An audit includes examining, on a test basis, evidence supporting the amounts and disclosures in the financial statements. An audit also includes assessing the accounting principles used and significant estimates made by the Board, as well as evaluating the overall financial statement presentation.

In our opinion, these financial statements present fairly, in all material respects, the financial position of the Foundation as at December 31, 2000 and the results of its operations for the year then ended in accordance with generally accepted accounting principles. As required by the Canada Corporations Act, we report that, in our opinion, these principles have been applied on a basis consistent with that of the preceding period.

MacKay & Partners

March 6, 2001
Yellowknife, Northwest Territories

MacKay & Partners
Chartered Accountants

THE YELLOWKNIFE COMMUNITY FOUNDATION
BALANCE SHEET
December 31, 2000

	2000	1999
ASSETS		
CURRENT		
Bank	\$ 2,382	\$ 5,611
Term Deposits and Securities (Note 3)	<u>203,005</u>	<u>142,308</u>
	<u>\$205,387</u>	<u>\$147,919</u>
CAPITAL ASSETS (Notes 2 and 4)	<u>1,046</u>	<u>-</u>
	<u>\$206,433</u>	<u>\$147,919</u>

	2000	1999
LIABILITIES		
CURRENT		
Payables and Accruals	\$ 529	\$ 1,000

	2000	1999
FOUNDATION'S FUND BALANCES		
CAPITAL FUNDS per Statement II	196,325	138,633
GENERAL FUND per Statement II	<u>9,579</u>	<u>8,286</u>
	<u>205,904</u>	<u>146,919</u>
	<u>\$206,433</u>	<u>\$147,919</u>

STATEMENT OF FUND BALANCES
For the Year Ended December 31, 2000

	2000	1999
CAPITAL FUNDS (Note 4)		
Opening Balance	\$138,633	\$ 80,735
Donations - Unrestricted Fund	14,079	30,390
Donations - Donor Advised Funds	42,813	27,508
Donations - Administration	<u>800</u>	<u>-</u>
Closing Balance	<u>\$196,325</u>	<u>\$138,633</u>
GENERAL FUND		
Opening Balance	\$ 8,286	\$ 9,538
Excess of Revenue over Expenditure per Statement III	<u>1,293</u>	<u>(1,252)</u>
Closing Balance	<u>\$ 9,579</u>	<u>\$ 8,286</u>

STATEMENT OF REVENUE AND EXPENDITURE

For the Year Ended December 31, 2000

	2000	1999
REVENUE		
Interest and Investments	\$ 7,751	\$ 2,248
Donations - Operations	3,721	1,951
Donated Services	<u>13,450</u>	<u>7,664</u>
	<u>24,922</u>	<u>11,863</u>
EXPENDITURE		
Advertising	3,051	-
Amortization	116	-
Bank Charges	31	1
Donations	4,820	2,000
Life Insurance Premiums	1,951	1,951
Office	11,559	4,264
Professional Fees	1,988	4,059
Subscriptions and Memberships	100	100
Telephone and Fax	<u>13</u>	<u>470</u>
	<u>23,629</u>	<u>13,115</u>
EXCESS OF REVENUE OVER EXPENDITURE	<u>\$ 1,293</u>	<u>(\$ 1,252)</u>

NOTES TO THE FINANCIAL STATEMENTS

For the Year Ended December 31, 2000

NOTE 1 NATURE OF FOUNDATION

The Yellowknife Community Foundation is a non-profit organization incorporated on June 1, 1993 under Part II of the Canada Corporations Act. The Foundation is a pooling of charitable gifts in capital funds, the earnings from which are used to meet a wide range of local needs and interests - the arts and other cultural activities, scholarships, medical and scientific research, environmental concerns and social problems. In some circumstances, the earnings may be allocated to a charitable cause or organization as directed by the donor. The Foundation is a registered charity and is classified as a public foundation for purposes of the Income Tax Act (Canada).

NOTE 2 SIGNIFICANT ACCOUNTING POLICIES

- a) Bequests, Endowments and Donations are recorded as received. The Foundation follows the restricted fund method of accounting for contributions.
- b) The Foundation receives materials and services at no cost from various sources. Commencing 1997, donations of these items are recorded in the accounts, where the determination of value can be reasonably determined. If the fair market value is not easily determined, then the transactions are not recorded.
- c) Investments are recorded at cost, and are written down to reflect any declines in market value which are other than temporary.
- d) Capital Assets are recorded at cost and amortization is claimed on the diminishing balance method at the following rates:

Furniture and Fixtures	20%
------------------------	-----

One-half (1/2) of the normal rate of amortization is recorded in the year of acquisition.

NOTE 3 TERM DEPOSITS AND SECURITIES

	Cost	Market
Money Market T-Bills	\$129,622	\$129,622
Balanced Mutual Funds	<u>73,383</u>	<u>85,670</u>
	<u>\$203,005</u>	<u>\$215,292</u>

Money Market T-Bills are subject to interest rate fluctuations.
Mutual Funds are subject to general market fluctuations.

NOTE 4 CAPITAL ASSETS

	Cost	Accumulated Amortization	Net Book Value 2000	1999
Furniture and Fixtures	<u>\$1,162</u>	<u>\$ 116</u>	<u>\$1,046</u>	<u>\$ -</u>

NOTE 5 CAPITAL FUNDS

The Board of Directors of the Foundation have established the following capital funds and fund guidelines.

Restricted Fund - established for accumulating capital donations for which the donor has restricted the use of the income for specified purposes.

Unrestricted Fund - established for accumulating capital donations for which the income generated has not been restricted by the donor.

Donor Advised Fund - annual grants are made in consultation with the donor.

Administration Endowment Fund - established for accumulating capital donations for which the income has been designated to fund the operating costs of the Foundation.

Fine and Performing Arts Fund - established for accumulating capital donations for which the income has been designated to support the development of NWT residents in the fine and performing arts.

Jenny Gamble-Fournier Memorial Scholarship Fund - established for accumulating capital donations for which the income has been designated to provide annual scholarships to students with high levels of academic achievement, well-rounded character and wide interests.

Mary Beth Miller Memorial Fund - established for accumulating capital donations for which the income has been designated to provide grants to athletes and sporting organizations that promote the qualities that Mary Beth exhibited.

	Balance <u>Beginning</u>	<u>Addition</u>	Balance <u>Ending</u>
Unrestricted	\$ 70,237	\$ 14,079	\$ 84,316
Administration Endowment	40,888	800	41,688
Fine and Performing Arts	21,196	20,730	41,926
Jenny Gamble-Fournier	6,312	4,600	10,912
Mary Beth Miller	-	17,483	17,483
	<u>\$138,633</u>	<u>\$ 57,692</u>	<u>\$196,325</u>

NOTE 5 LIFE INSURANCE

The foundation has been designated as the beneficiary of life insurance policies. Premiums paid by the insured are recorded as revenue, then recorded as expenditures. As at December 31, 2000 the amount of insurance in force for which the Foundation has been designated as beneficiary totals \$34,350.

NOTE 6 STATEMENT OF CASH FLOWS

A statement of cash flows has not been prepared as it would not provide additional meaningful information.

Foundation Grant Recipients to April, 2001

- Side Door Youth Drop-In Centre
- NWT Special Olympics
- Ed Baker Seniors Recreation Centre
- Yellowknife Ski Club
- Yellowknife Polar Bear Swim Club
- Youth Volunteer Corps
- The Yellowknife Seniors Society
- Yellowknife Badminton Club
- Yellowknife Concerned Parents
- Yellowknife Women's Centre
- Canadian Mental Health Association (NWT Help Line)
- Canadian National Institute for the Blind
- Canadian Youth Against Impaired Driving (SADD)
- St. Pat's High School - Bridges Program
- Doug Richard (Fine & Performing Arts Fund 2000)
- Rene Bonnett (Fine & Performing Arts Fund 2000)
- Alexander Legaree (Jenny Gamble-Fournier Fund 2000)
- Yellowknife Foster Family Association
- United Way North (Yellowknife)



Presentation to Doug Richard

Former Directors

Today's success would not have been possible without the contributions made by former Directors of the Board:

Barb Bromley	1994 - 1995
Annetta Kuntz	1994 - 1996
Kevin Montgomery	1993 - 1994
Janet Robinson	1993 - 1995
Bishop John Sperry	1993 - 1996
Dennis Crane	1993 - 1997
Ray Parker	1998
Geoff Wiest	1993 - 1999
Mike Ballantyne	1996 - 2001
Gerry Avery	1993 - 2001
Max Hall	1994 - 2001

and by Peg Melanson, volunteer Executive Director of the Yellowknife Community Foundation from 1993 - 1994.

Corporate Support

The Yellowknife Community Foundation would like to formally acknowledge the generous corporate support provided by a number of community-minded businesses in Yellowknife:

Artisan Press Limited
Avery, Cooper & Co.
Canarctic Graphics
Inkit Limited
Gullberg, Wiest, MacPherson & Kay
MacKay & Partners
Northern News Services
Northwestel
RTL Robinson Enterprises Ltd.

Nominating Committee

The Yellowknife Foundation Board is selected according to its bylaws by a nominating committee consisting of:

- the Mayor of the City of Yellowknife,
- the President of the Yellowknife Chamber of Commerce,
- the President of the Yellowknife Ministerial Association,
- the Chairperson of the Board of Stanton Yellowknife Hospital, and
- the Commanding Officer of the Royal Canadian Mounted Police, "G" Division.

The 2001/2002 Board of Directors was selected by the Nominating Committee whose current members are:

- Mayor Gordon Van Tighem
- John Ondrack (2000/2001 President, Chamber of Commerce),
- Alan Hoeft, representing the 2000/2001 President of the Yellowknife Ministerial Association,
- Larry Elkin, 2001 Chairperson of the Board of Stanton Yellowknife Hospital, and
- Bill Sweeney, Chief Superintendent, R.C.M.P., "G" Division

The Future

The Yellowknife Community Foundation has a bright future and will be supporting worthwhile community causes for years to come.

If you would like to learn more about the Yellowknife Community Foundation, watch the Yellowknifer newspaper for our information ads or contact us at:

The Yellowknife Community Foundation
P.O. Box 1620
4918 - 50th Street
Yellowknife, NT X1A 2P2
Voice Mail: 920-5692

The Yellowknife Community Foundation
P.O. Box 1620
4918 - 50th Street
Yellowknife, NT X1A 2P2
Voice Mail: 920-5692



donated by:

