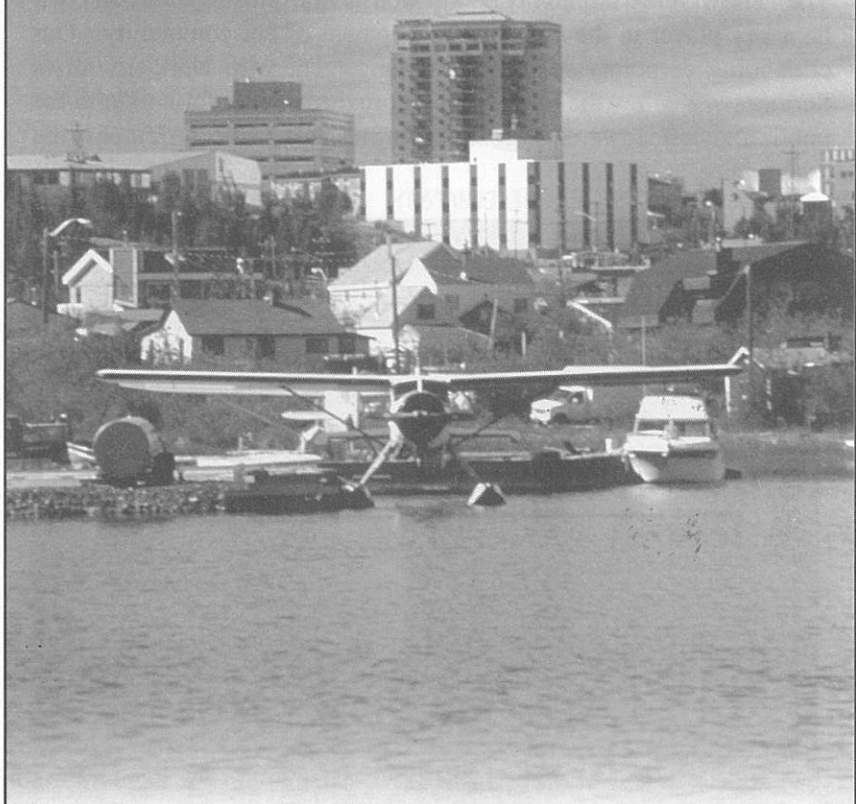




YELLOWKNIFE  
COMMUNITY  
FOUNDATION



**1999**

Photo by Terry Parker

**ANNUAL REPORT**

## President's Message

The Yellowknife Community Foundation began operations in 1991 and was formally incorporated and registered as a charity in 1993. To date, a total of 115 individual and organizational donors have contributed to a capital fund of nearly \$148,000 (December 31, 1999).

1999 was a year of significant growth and development for the Foundation. The *Fine and Performing Arts Fund* and the *Jenny Gamble-Fournier Memorial Scholarship Fund* were initiated. The Foundation was the recipient of a significant anonymous donation in support of general gifts to the community. The Board was also able to continue to approve a number of grants to worthy local programs and services.

The Yellowknife Community Foundation has a promising future and will be a key player in the positive development of our community. Our continuing corporate sponsorship arrangement with Northern News Services will allow the Foundation to provide more information to the public and build towards its goal of being a significant contributor to the community.



*Presentation to St. Pat's High School - Bridges Program*

## The 2000/2001 Board of Directors

The Foundation is managed by a volunteer Board of Directors:

Gerry Avery President 1993 - present	Phone: (867)873-3441 Fax: (867)873-2353 E-mail: <a href="mailto:avery@averyco.nt.ca">avery@averyco.nt.ca</a>
Mike Ballantyne Board Member 1996 - present	Phone: (867)920-2963 Fax: (867)920-5069 E-mail: <a href="mailto:ean@internorth.com">ean@internorth.com</a>
Blair Dunbar Board Member 1996 - present	Phone: (867)873-5707 Fax: (867)873-8976 E-mail: <a href="mailto:dunbar@ssimicro.com">dunbar@ssimicro.com</a>
Max Hall Board Member 1994 - present	Phone: (867)920-5600 Fax: (867)669-3465 E-mail: <a href="mailto:maxhall@city.yellowknife.nt.ca">maxhall@city.yellowknife.nt.ca</a>
Connie Landstrom Board Member 1996 - present	Phone: (867)873-3809 Fax: (867)669-8881 E-mail: <a href="mailto:connie_landstrom@learnnet.nt.ca">connie_landstrom@learnnet.nt.ca</a>
Ian Legaree Vice President 1993 - present	Phone: (867)873-7245 Fax: (867)920-6467 E-mail: <a href="mailto:legaree.clan@nt.sympatico.ca">legaree.clan@nt.sympatico.ca</a>
Julia Mott Board Member 1999 - present	Phone: (867)669-6601 Fax: (867)669-6603 E-mail: <a href="mailto:jmott@internorth.com">jmott@internorth.com</a>
Louise Vertes Board Member 1996 - present	Phone: (867)873-8953 Fax: (867)920-4538 E-mail: <a href="mailto:lvertes@ssimicro.com">lvertes@ssimicro.com</a>
Doug Nelson Board Member 2000 - present	Phone: (867)766-5201 Fax: (867)873-5488 E-mail: <a href="mailto:doug.j.nelson@royalbank.com">doug.j.nelson@royalbank.com</a>

## **Our Donors**

Since its inception, the Yellowknife Community Foundation has received capital fund donations from 115 community-minded individuals and organizations.

### ***Fine and Performing Arts Fund***

#### ***Memorial Donations Received in Memory of:***

Dennis Crane	Sisko Kaarina Emery
Mame Remnant	Elsie Makarenko
Chris George	

The Board of Directors would also like to acknowledge **Alistair Gamble, Theresa Slator** and **Community Foundations of Canada** for their assistance and encouragement in the development of the Yellowknife Community Foundation.

### ***Fine and Performing Arts Fund***

In 1999, "Kids Unlimited" established a permanent ***Fine and Performing Arts Fund*** with the Yellowknife Community Foundation. Earnings from the Fund will be used to support the development of NWT residents in the fine and performing arts. "Kids Unlimited" is a Yellowknife non-profit society that offered drama, art and other recreation programs for children and youth during the 1980s and early 1990s. Scholarships are available each year for those pursuing artistic excellence in drama, dance, music and theatre arts including technical production, studio arts, film or photography.

In early 2000, the Community Television Society of Yellowknife added a significant contribution to the Fund. Additional donations to the ***Fine and Performing Arts Fund*** are still accepted. Please contact the Yellowknife Community Foundation for information about donating or an application for scholarship.

### ***Jenny Gamble-Fournier Memorial Scholarship Fund***

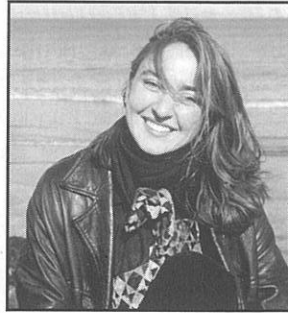
Jenny Gamble-Fournier was a little girl when her family moved to Yellowknife in 1978. After graduating high school, she spent a year in Europe and then went on to complete Carleton University's journalism program although her real passion was for art history. She worked in Yellowknife briefly before returning to Europe to be with her husband-to-be, Chris Fournier. Jenny and Chris were married less than two months before she succumbed to bone cancer in late 1999.

A talented painter and poet and a passionate spirit, Jenny was very proud of her "northern" roots. In her memory, friends and family have established a permanent scholarship fund for students pursuing a post-secondary education, with an emphasis on the arts. The fund will provide annual scholarships to students of Yellowknife's Sir John Franklin High School with high levels of academic achievement, well-rounded character and wide interests.

Donations to the ***Jenny Gamble-Fournier Memorial Scholarship Fund*** are still accepted. Please contact the Yellowknife Community Foundation for information about donating or an application for scholarship.

***Jenny Gamble-Fournier  
Memorial Scholarship Fund***

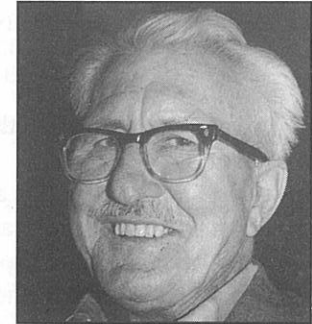
The Jenny Gamble-Fournier Memorial Scholarship Fund received donations from many friends and family across Canada in 1999:



**Hall of Fame Donors**

**Ed Baker**

Ed Baker's name is quite familiar to many Yellowknife residents. He donated \$100,000 to launch the fund raising drive to build the Senior's Recreation Centre that now bears his name.



Ed Baker was also one of the first donors to the Yellowknife Community Foundation. His precious gift of \$10,000 will be protected and grow over the years and the income generated will be providing for the community forever.

Not only will Ed Baker be remembered because an important building bears his name, he will be remembered for contributing to many local needs through the Yellowknife Community Foundation.

**Barb Bromley**



Barb Bromley has donated time, energy and compassion to numerous causes in Yellowknife since arriving as a young bride in 1948.

Although her many contributions to Yellowknife and its residents are too numerous to list, they include organizing the city's first baby clinics and immunization programs, assisting in the formation of the first Scout and Cub troop, pioneering the first annual Midnight Madness Festival and the first bedding plant sale.

Still an active volunteer for a number of charities in the city, Barb also makes an annual donation to the Foundation by paying premiums on a life insurance policy which names the Foundation as the beneficiary.

## Yellowknife Community Foundation - Grant Guidelines

The Yellowknife Community Foundation awards grants in support of projects which:

- advance the welfare of the needy and alleviate human suffering and poverty,
- assist and promote arts and cultural activities,
- assist sport, recreation and community development,
- assist and advance the provision of medical services, and
- assist and advance other community activities or facilities of a charitable nature.

For information on how to contribute to the General Fund or for an application form for a grant, contact the Yellowknife Community Foundation.

### How the Yellowknife Community Foundation Works

Donations to the Yellowknife Community Foundation are placed in a permanent capital fund, with the generated income being allocated to meet timely objectives. The fund is protected from inflation by reinvesting a portion of the earnings. The Foundation is not dedicated to any specific charity; its role is to support the many and varied needs in Yellowknife.

Donations can be made through:

- an outright gift or pledge in a lump sum, or over a period of years
- a dedicated life insurance policy
- a bequest in your Will
- the transfer of an existing fund
- the offering of real estate or other acceptable properties

Contributions can be made to the general fund or in a separate fund in your name or the name of someone you wish to be remembered. Donations may qualify for deductions for Income Tax purposes.

## THE YELLOWKNIFE COMMUNITY FOUNDATION YELLOWKNIFE, N.W.T.

FINANCIAL STATEMENTS  
For the Year Ended December 31, 1999

### AUDITORS' REPORT

#### To the Members of The Yellowknife Community Foundation:

We have audited the Balance Sheet of The Yellowknife Community Foundation as at December 31, 1999 and the Statements of Capital Funds and Surplus, and Revenue and Expenditure for the year then ended. These financial statements are the responsibility of the Board. Our responsibility is to express an opinion on these financial statements based on our audit.

We conducted our audit in accordance with generally accepted auditing standards. Those standards require that we plan and perform an audit to obtain reasonable assurance whether the financial statements are free of material misstatement. An audit includes examining, on a test basis, evidence supporting the amounts and disclosures in the financial statements. An audit also includes assessing the accounting principles used and significant estimates made by management, as well as evaluating the overall financial statement presentation.

In our opinion, these financial statements present fairly, in all material respects, the financial position of the Foundation as at December 31, 1999 and the results of its operations for the year then ended in accordance with generally accepted accounting principles. As required by the Canada Corporations Act, we report that, in our opinion, these principles have been applied on a basis consistent with that of the preceding period.



July 19, 2000  
Yellowknife, Northwest Territories

MacKay & Partners  
Chartered Accountants

STATEMENT I  
**THE YELLOWKNIFE COMMUNITY FOUNDATION**  
**BALANCE SHEET**  
 December 31, 1999

ASSETS		
	1999	1998
<b>CURRENT</b>		
Bank	\$ 5,611	\$ 1,322
Term Deposits and Securities (Note 3)	<u>142,308</u>	<u>90,011</u>
	<u>\$147,919</u>	<u>\$91,333</u>
LIABILITIES		
<b>CURRENT</b>		
Payables and Accruals	\$ 1,000	\$ 1,060
FOUNDATION'S FUND BALANCES		
<b>CAPITAL FUNDS</b> per Statement II	138,633	80,735
<b>GENERAL FUND</b> per Statement II	<u>8,286</u>	<u>9,538</u>
	<u>146,919</u>	<u>90,273</u>
	<u>\$147,919</u>	<u>\$91,333</u>

STATEMENT II  
**STATEMENT OF FUND BALANCES**  
 For the Year Ended December 31, 1999

	1999	1998
<b>CAPITAL FUNDS</b> (Note 4)		
Opening Balance	\$ 80,735	\$ 74,559
Donations - Unrestricted Fund	28,500	6,176
Donations - Donor Advised Funds	<u>29,398</u>	<u>-</u>
Closing Balance	<u>\$138,633</u>	<u>\$ 80,735</u>
<b>GENERAL FUND</b>		
Opening Balance as stated	\$ 15,980	\$ 7,171
Adjustment to Prior Period (Note 7)	( 6,442)	-
Opening Balance - as restated	9,538	7,171
Excess of Revenue over Expenditure per Statement III	( 1,252)	2,367
Closing Balance	<u>\$ 8,286</u>	<u>\$ 9,538</u>

STATEMENT III  
**STATEMENT OF REVENUE AND EXPENDITURE**  
 For the Year Ended December 31, 1999

	1999	1998
<b>REVENUE</b>		
Grants - from Deferred	\$ -	\$10,651
Interest and Investments	2,248	2,535
Life Insurance Premiums	1,951	1,951
Donated Services	<u>7,664</u>	<u>3,257</u>
	<u>11,863</u>	<u>18,394</u>
<b>EXPENDITURE</b>		
Advertising	-	1,184
Bank Charges	1	25
Donations	2,000	9,000
Life Insurance Premiums	1,951	1,951
Office	4,264	438
Professional Fees	4,059	2,859
Subscriptions and Memberships	100	100
Telephone and Fax	<u>740</u>	<u>470</u>
	<u>13,115</u>	<u>16,027</u>
<b>EXCESS OF REVENUE OVER EXPENDITURE</b>	<u>(\$ 1,252)</u>	<u>\$ 2,367</u>

**NOTES TO THE FINANCIAL STATEMENTS**  
 For the Year Ended December 31, 1999

**NOTE 1 NATURE OF FOUNDATION**

The Yellowknife Community Foundation is a non-profit organization incorporated on June 1, 1993 under Part II of the Canada Corporations Act. The Foundation is a pooling of charitable gifts in capital funds, the earnings from which are used to meet a wide range of local needs and interests - the arts and other cultural activities, scholarships, medical and scientific research, environmental concerns and social problems. In some circumstances, the earnings may be allocated to a charitable cause or organization as directed by the donor. The Foundation is a registered charity and is classified as a public foundation for purposes of the Income Tax Act (Canada).

**NOTE 2 SIGNIFICANT ACCOUNTING POLICIES**

- a) Bequests, Endowments and Donations are recorded as received. The Foundation follows the restricted fund method of accounting for contributions.
- b) The Foundation receives materials and services at no cost from various sources. Commencing 1997, donations of these items are recorded in the accounts, where the determination of value can be reasonably determined. If the fair market value is not easily determined, then the transactions are not recorded.
- c) Investments are recorded at cost, and are written down to reflect any declines in market value which are other than temporary.
- d) Expenditures for grants are recorded when grants are awarded by the Board of Directors.

**NOTE 3 TERM DEPOSITS AND SECURITIES**

	<u>Cost</u>	<u>Market</u>
Money Market T-Bills	\$48,264	\$48,264
Balanced Mutual Funds	68,797	79,409
Guaranteed Investment Certificate, 4.35%, maturing 2000	3,772	3,772
Guaranteed Investment Certificate, 3.5%, maturing 2000	<u>21,475</u>	<u>21,475</u>
	<u>\$142,308</u>	<u>\$152,920</u>

Money Market T-Bills are subject to interest rate fluctuations.  
Mutual Funds are subject to general market fluctuations.

**NOTE 4 CAPITAL FUNDS**

The Board of Directors of the Foundation have established the following capital funds and fund guidelines.

**Restricted Fund** - established for accumulating capital donations for which the donor has restricted the use of the income for specified purposes.

**Unrestricted Fund** - established for accumulating capital donations for which the income generated has not been restricted by the donor.

**Donor Advised Fund** - annual grants are made in consultation with the donor.

**Administration Endowment Fund** - established for accumulating capital donations for which the income has been designated to fund the operating costs of the Foundation.

**Fine and Performing Arts Fund** - established for accumulating capital donations for which the income has been designated to support the development of NWT residents in the fine and performing arts.

**Jenny Gamble-Fournier Memorial Scholarship Fund** - established for accumulating capital donations for which the income has been designated to provide annual scholarships to students with high levels of academic achievement, well-rounded character and wide interests.

	<u>Balance</u>	<u>Addition</u>	<u>Balance</u>
	<u>Beginning</u>	<u>Addition</u>	<u>Ending</u>
Unrestricted	\$ 39,847	\$ 30,390	\$ 70,237
Administration Endowment	40,888	-	40,888
Fine and Performing Arts	-	21,196	21,196
Jenny Gamble-Fournier	<u>-</u>	<u>6,312</u>	<u>6,312</u>
	<u>\$80,735</u>	<u>\$ 57,898</u>	<u>\$138,633</u>

**NOTE 5 LIFE INSURANCE**

The foundation has been designated as the beneficiary of life insurance policies. Premiums paid by the insured are recorded as revenue, then recorded as expenditures. As at December 31, 1999 the amount of insurance in force for which the Foundation has been designated as beneficiary totals \$34,350.

**NOTE 6 STATEMENT OF CASH FLOWS**

A statement of cash flows has not been prepared as it would not provide additional meaningful information.

**NOTE 7 ADJUSTMENTS TO PRIOR PERIOD**

At December 31, 1998, grant income was understated by \$10,651, donations were understated by \$8,000, interest income was overstated by \$7,909 and advertising was understated by \$1,184 resulting in a net difference of \$2,283. These amounts have been adjusted retroactively to December 31, 1998 and the comparative figures amended as follows:

Grants increased	(\$10,651)
Interest Income decreased	7,909
Advertising Expense increased	1,184
Donations increased	<u>8,000</u>
Excess of Revenue over Expenditure decreased	<u>\$ 6,442</u>
Bank decreased	\$3,750
Term Deposits and Securities decreased	4,159
Prepaid decreased	1,184
Deferred Grant decreased	(3,651)
Accounts Payable increased	<u>1,000</u>
General Fund decreased	<u>\$ 6,442</u>

**Foundation Grant Recipients to March, 2000**

Side Door Youth Drop-In Centre  
NWT Special Olympics  
Ed Baker Seniors Recreation Centre  
Yellowknife Ski Club  
Yellowknife Polar Bear Swim Club  
Youth Volunteer Corps  
The Yellowknife Seniors Society  
Yellowknife Badminton Club  
Yellowknife Concerned Parents  
Yellowknife Women's Centre  
Canadian Mental Health Association (NWT Help Line)  
Canadian National Institute for the Blind  
Students Against Drinking and Driving  
St. Pat's High School - Bridges Program

## Former Directors

Today's success would not have been possible without the contributions made by former Directors of the Board:

Barb Bromley	1994 - 1995
Annetta Kuntz	1994 - 1996
Kevin Montgomery	1993 - 1994
Janet Robinson	1993 - 1995
Bishop John Sperry	1993 - 1996
Dennis Crane	1993 - 1997
Ray Parker	1998
Geoff Wiest	1993 - 1999

and by Peg Melanson, volunteer Executive Director of the Yellowknife Community Foundation from 1993 - 1994.

## Nominating Committee

The Yellowknife Foundation Board is selected according to its bylaws by a nominating committee consisting of:

- the Mayor of the City of Yellowknife,
- the President of the Yellowknife Chamber of Commerce,
- the President of the Yellowknife Ministerial Association,
- the Chairperson of the Board of Stanton Yellowknife Hospital, and
- the Commanding Officer of the Royal Canadian Mounted Police, "G" Division.

The 2000/2001 Board of Directors was selected by the Nominating Committee whose current members are:

- Mayor Dave Lovell,
- John Ondrack (1999 President, Chamber of Commerce),
- Larry Warkentin (1999 President, Yellowknife Ministerial Association), and
- Bill Sweeney, Chief Superintendent, R.C.M.P., "G" Division

## Corporate Support

The Yellowknife Community Foundation would like to formally acknowledge the generous corporate support provided by a number of community-minded businesses in Yellowknife:

Artisan Press Limited  
Avery, Cooper & Co.  
Canarctic Graphics  
Inkit Limited  
Gullberg, Wiest, MacPherson & Kay  
MacKay & Partners  
Northern News Services  
NorthwesTel  
RTL Robinson Enterprises Ltd.

## The Future

The Yellowknife Community Foundation has a bright future and will be supporting worthwhile community causes for years to come.

If you would like to learn more about the Yellowknife Community Foundation, watch the Yellowknifer newspaper for our information ads or contact us at:

The Yellowknife Community Foundation  
P.O. Box 1620  
4918 - 50<sup>th</sup> Street  
Yellowknife, NT X1A 2P2



The Yellowknife Community Foundation  
P.O. Box 1620  
4918 - 50th Street  
Yellowknife, NT X1A 2P2



**RTL - Robison Enterprises Ltd.**



**AVERY, COOPER & CO.**  
Certified General Accountants

**MacKay  
& Partners**  
CHARTERED ACCOUNTANTS

**inkit**

**Gullberg, Wiest  
& MacPherson**

**artisan**  
PRESS · LTD



**Northwestel**

donated by:

